

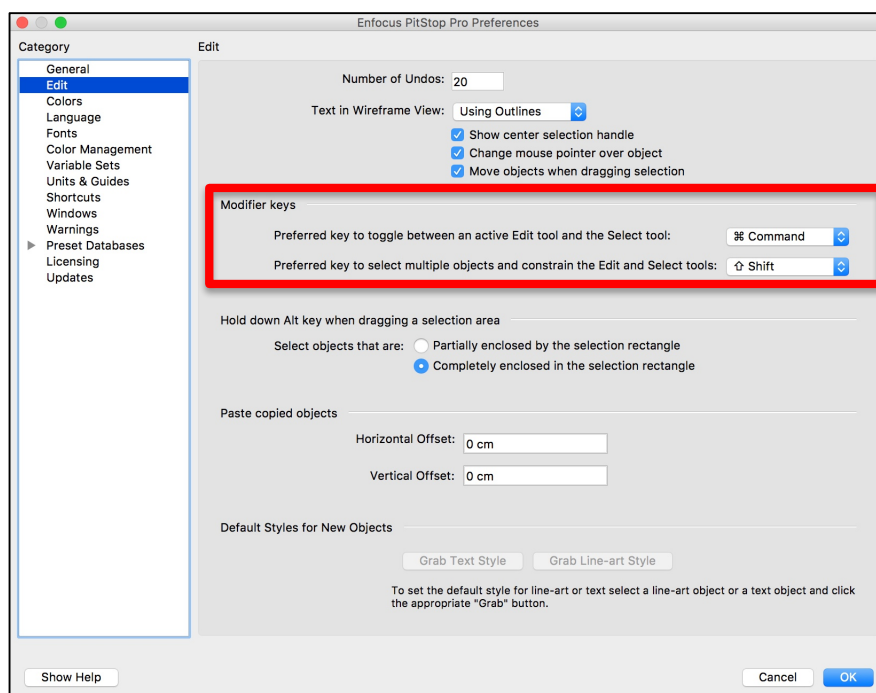
PitStop 2018 - New features and functionality added in PitStop 2018

- **'Shift' modifier preference (clash with Acrobat Output Preview)**

Most PitStop users are probably aware of an issue with the shift selection and the Adobe Acrobat output preview. Using 'shift' when output preview is open brings up a Sticky Note in Acrobat instead of allowing you to select multiple objects.

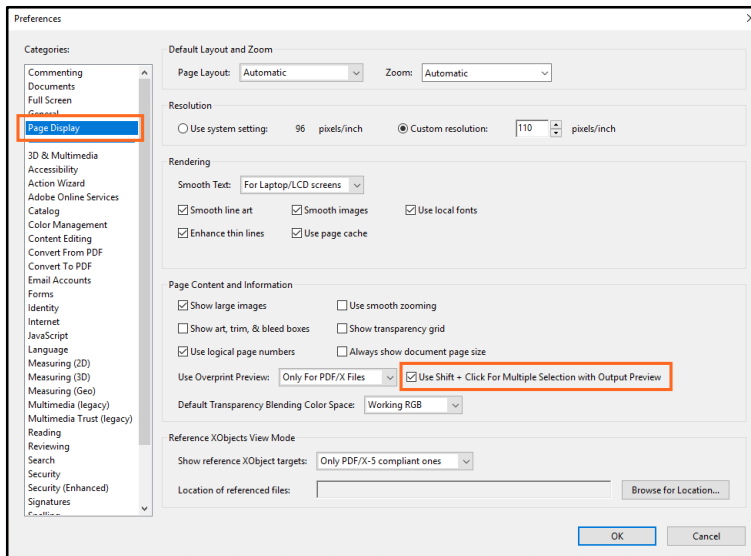
We decided to make a new preference to allow a different modifier key for 'shift' in PitStop 2018. This will allow users to get around this issue (see below).

However it seems Adobe have listened to their users and have also created a workaround



In the Adobe Acrobat DC release of 13th February 2018, Adobe also made a preference to reserve 'shift click' for multiple selections (see following screenshot). This means any users with this Acrobat DC version can use the Acrobat preference instead of changing the PitStop behavior.

For users with earlier Acrobat versions the PitStop preference will be very useful.



- **New XML Report (v3)**
PitStop Server 2018 (including Command Line version) now have a new XML report.

This is the v3 report; this is a major improvement over the older reports as the XML structure is much improved. This makes the report much easier to work with when using XPaths or parsing for information.

```

1  <?xml version="1.0" encoding="UTF-8"?>
2  <enfocussReport version="3.0" unit="mm" xml:lang="en-US">
3    <PreflightReport errors="3" criticalfailures="0" noncriticalfailures="0" signoffs="0" fixes="8" warnings="0">
4      <Errors>
5        <PreflightReportItem ActionID="4377">
6          <Message>PDF/X-4 : Spot color PANTONE 116 C has different alternate color values</Message>
7          <StringContext>
8            <BaseString>PDF/X-4 : Spot color [%SpotColorName% has different alternate color values</BaseString>
9            <Var name="SpotColorName">PANTONE 116 C</Var>
10           </StringContext>
11         </PreflightReportItem>
12        <PreflightReportItem ActionID="3159">
13          <Message>Document uses 2 separations, should be less than or equal to 0. Those 2 separations are: PANTONE 116 C, PANTONE 485 C</Message>
14          <StringContext>
15            <BaseString>Document uses %NumberOfSeparations% separations, should be %Comparator% %ReferenceNumberOfSpotColors%. Those %Num
16            <Var name="ReferenceNumberOfSpotColors">8</Var>
17            <Var name="Comparator">less than or equal to</Var>
18            <Var name="NumberOfSeparations">2</Var>
19            <Var name="SeparationNames">PANTONE 116 C</Var>
20            <Var name="SeparationNames">PANTONE 485 C</Var>
21            </StringContext>
22          </PreflightReportItem>
23        <PreflightReportItem ActionID="3167">
24          <Message>PDF/X-4 : PDF/X version is empty, should be PDF/X-4</Message>
25          <StringContext>
26            <BaseString>PDF/X-4 : PDF/X version is empty, should be %PDFXTargetVersion%</BaseString>
27            <Var name="PDFXTargetVersion">PDF/X-4</Var>
28            </StringContext>
29          </PreflightReportItem>
30      </Errors>
31      <Fixes>
32        <PreflightReportItem ActionID="2007">
33          <Message>Converted color to Device CMYK color space (112x on page 1)</Message>
34          <StringContext>
35            <BaseString>Converted color to %ColorSpace%</BaseString>
36            <Var name="ColorSpace">Device CMYK color space</Var>
37            </StringContext>
38            <Location page="1" minX="0" minY="0" maxX="330" maxY="50"/>
39            <Location page="1" minX="-3.339" minY="0" maxX="228.367" maxY="7.326"/>
40            <Location page="1" minX="2.123" minY="-1.82" maxX="23.964" maxY="51.82"/>
41            <Location page="1" minX="3.943" minY="0" maxX="22.144" maxY="50"/>
42            <Location page="1" minX="169.878" minY="34.941" maxX="173.879" maxY="39.17"/>
43            <Location page="1" minX="172.804" minY="33.431" maxX="176.092" maxY="39.17"/>
44            <Location page="1" minX="175.389" minY="33.431" maxX="178.677" maxY="39.17"/>
45            <Location page="1" minX="178.036" minY="35.148" maxX="181.406" maxY="39.17"/>
46            <Location page="1" minX="180.331" minY="33.431" maxX="183.619" maxY="39.17"/>
47            <Location page="1" minX="182.957" minY="33.917" maxX="187.279" maxY="39.17"/>
48            <Location page="1" minX="139.460" minY="16.213" maxX="217.689" maxY="31.014"/>
49            <Location page="1" minX="139.856" minY="16.603" maxX="217.3" maxY="31.426"/>
50            <Location page="1" minX="133.36" minY="1.191" maxX="135.598" maxY="4.899"/>
51            <Location page="1" minX="136.432" minY="1.191" maxX="138.671" maxY="4.899"/>
52            <Location page="1" minX="139.504" minY="1.388" maxX="142.394" maxY="4.855"/>
53            <Location page="1" minX="144.514" minY="2.277" maxX="147.102" maxY="4.747"/>
54            <Location page="1" minX="146.276" minY="1.223" maxX="148.881" maxY="4.747"/>
55            <Location page="1" minX="148.388" minY="2.429" maxX="150.888" maxY="4.747"/>

```

- **PitStop Server 2018 – Switch Configurator**

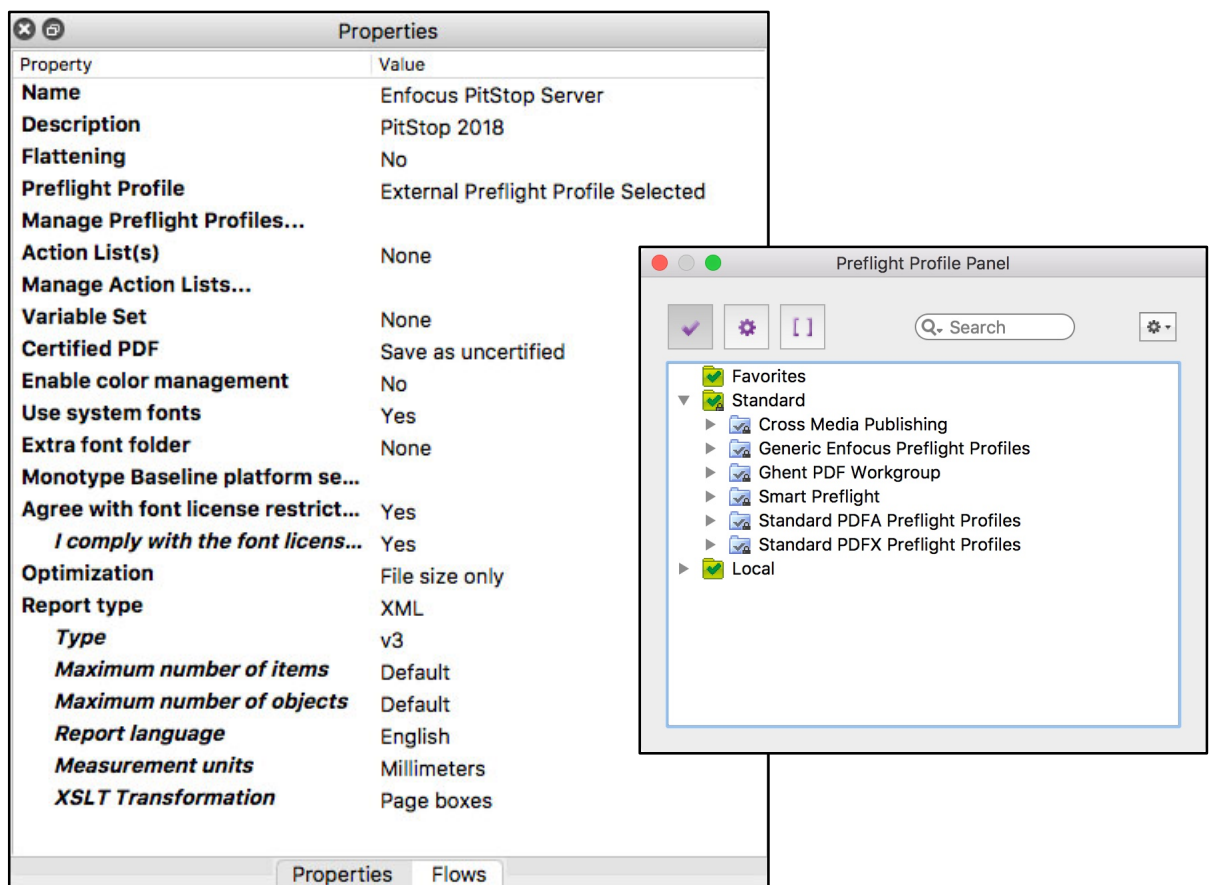
PitStop Server also gets a new Switch Configurator in this version.

This has some major improvements over the old version. Firstly you can now create and edit Preflight Profiles and Action Lists directly in the configurator, so you no longer have to open PitStop Pro or Server when you want to make changes.

Secondly the caching of Preflight Profiles and Action Lists has been removed, this means that when you add a new Action List or Preflight Profile to the database, they are available immediately in the Configurator. You don't have to hack around this issue anymore, it's resolved.

Thirdly the user experience has been much improved and you should recognize the familiar PitStop interface. This includes a folder structure so you no longer have a long unwieldy list of Preflight Profiles and Action Lists; in addition you also have a search functionality now as well.

IMPORTANT: Please note this new configurator only works with Switch 2017 update 1, so please ensure you are on a supported Switch version before installing.



- **PitStop Server Configurator - XSLT**

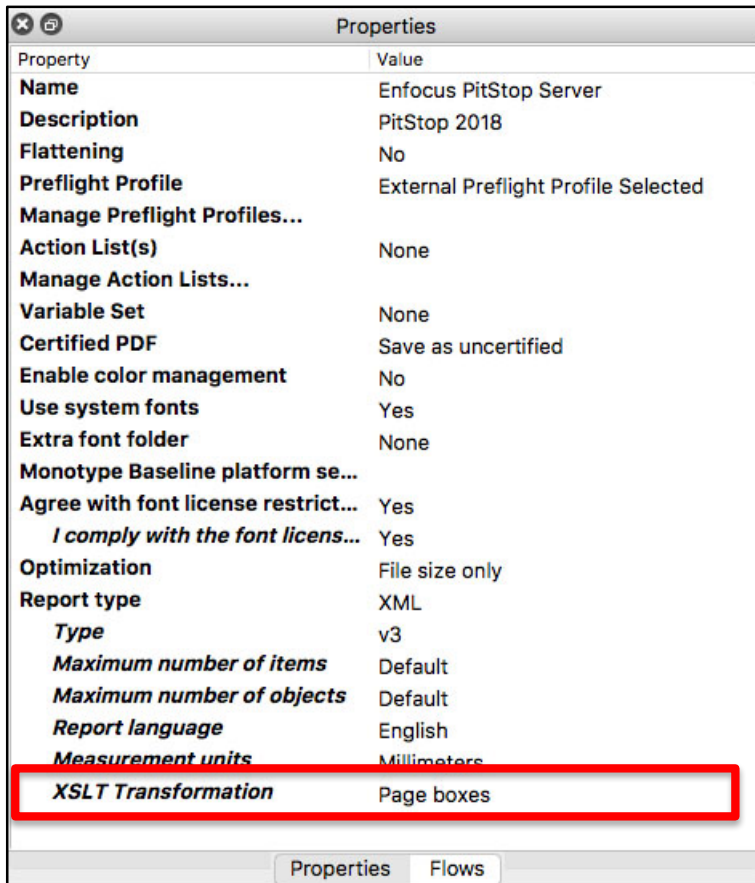
Only available in the PitStop Server configurator, you can now use an XSLT transformation.

You can add your own custom XSLT, or use one of the default ones that we have provided. Default transformations are: Preflight Results, Page Boxes, Page Color Type, Layers, Fonts, Images, Ink usage, Output Intents, Text Summary and XML

Summary.

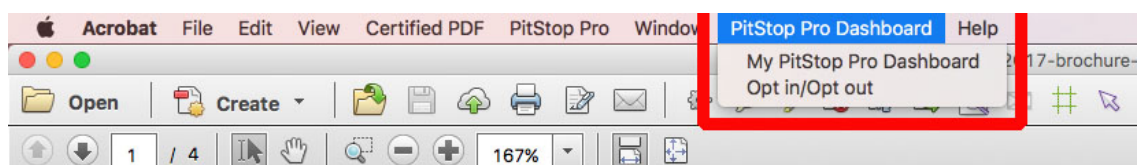
The default XSLT's only work with the new v3 XML report, any custom ones can work with the report version of your choice.

The XSLT transformations are based on XSLT 1.0 to support the same version as Switch.



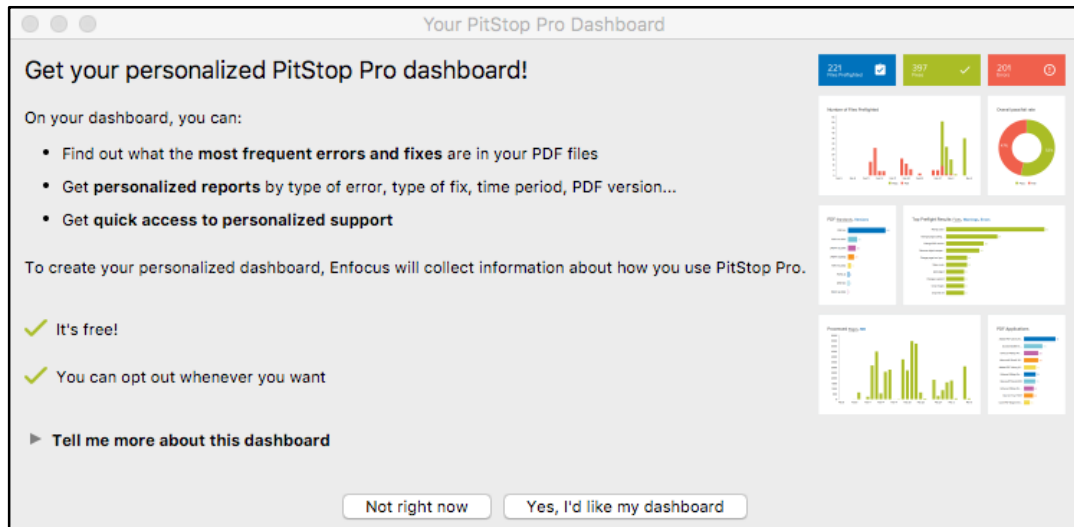
- **Your Personal PitStop Pro Dashboard**

We now offer you the option to have your own PitStop Pro dashboard that will show you information about what you do in PitStop, and what are your most commonly used features and problems.



You need to opt-in, and as you can see there is a specific menu item in PitStop Pro where you do this.

If you chose to opt-in, you then see the following screen where you can see more data about the dashboard, the kind of data that is gathered, what it will be used for and what you can get out of the dashboard.

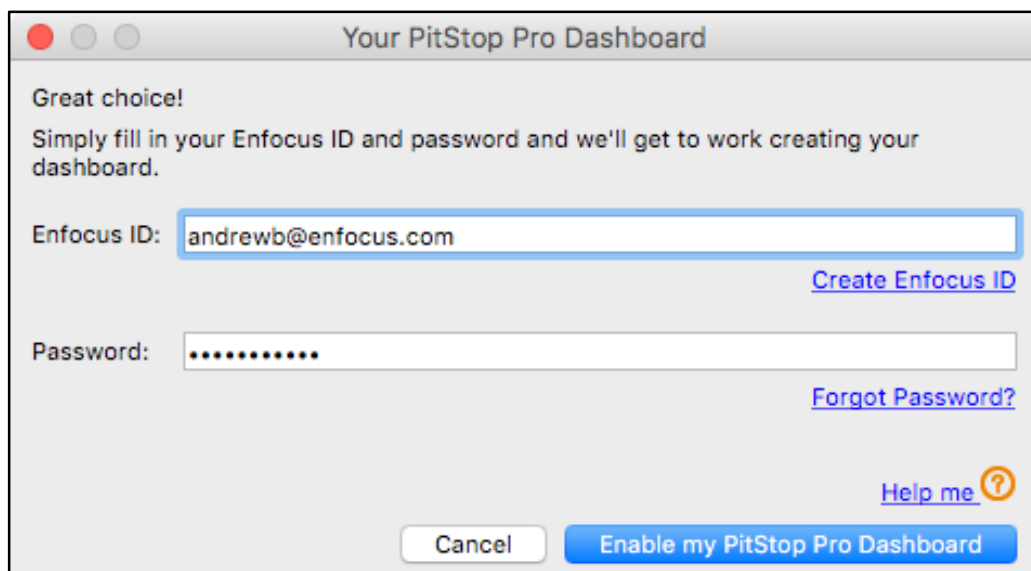


If you chose 'Yes I'd like my Dashboard' you then see the following screen where you are asked to enter an EnfocousID and password. These fields should be automatically populated, using the EnfocousID that was used to activate PitStop on your computer.

You can choose to use this, or enter a different one.

This EnfocousID will be the one that the dashboard is shown under, so if you go to the Enfocous website and login, the dashboard will be available.

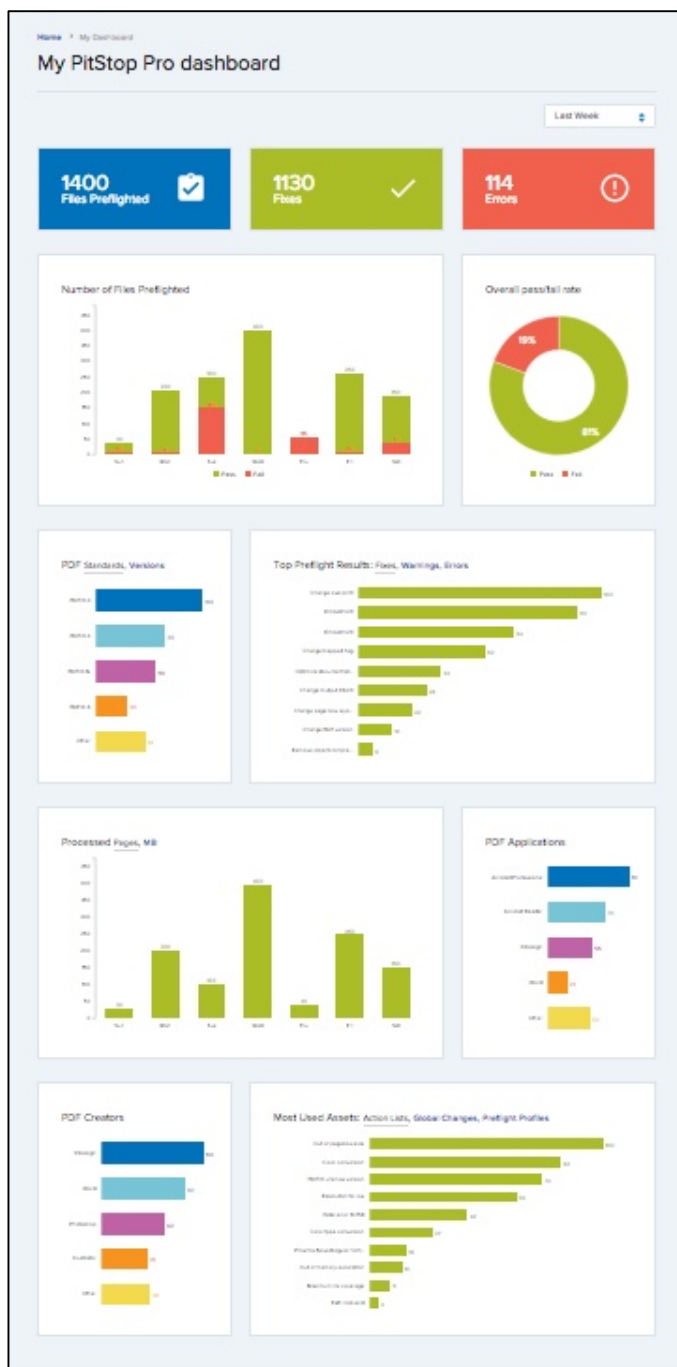
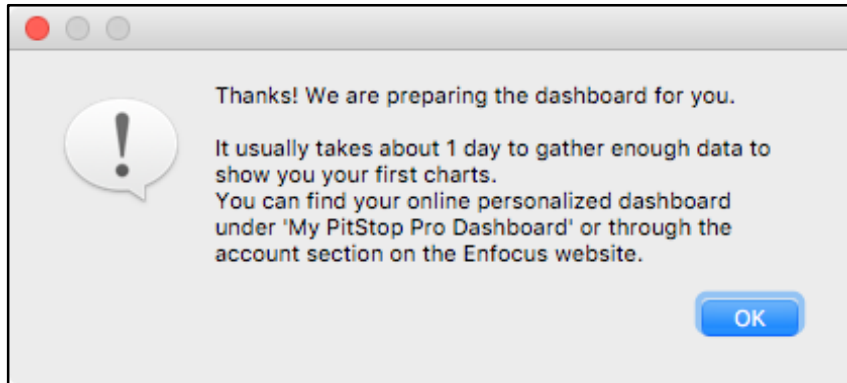
You don't have to have PitStop Pro installed to see the dashboard, it's just a webpage so you can see it on any device, although it's not optimized for all form factors at the moment.



To proceed just click 'Enable my PitStop Pro Dashboard'.

You'll then see this information screen, data is not gathered in real time, so it will take sometime for data to start to appear in your dashboard.

You'll also see information on how you can access your dashboard.



- **Action List Visualizer**

Actions and Action Lists are a very important part of PitStop as they allow users to create individual checks and fixes for specific problems, production issues or customer files.

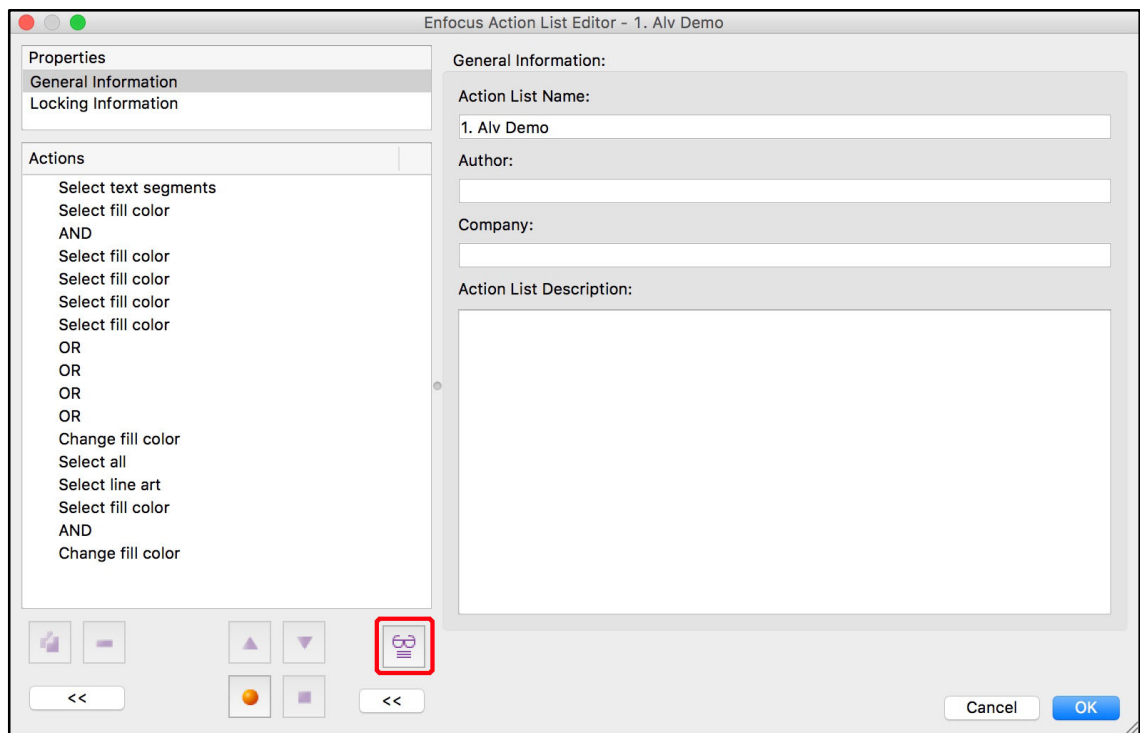
However anyone who has created Action Lists will agree that they are often complex and confusing, especially when the operators AND, OR and NOT are involved.

Equally when you have created an Action List and it is not giving the expected result, it's very difficult to work out what is going wrong and where.

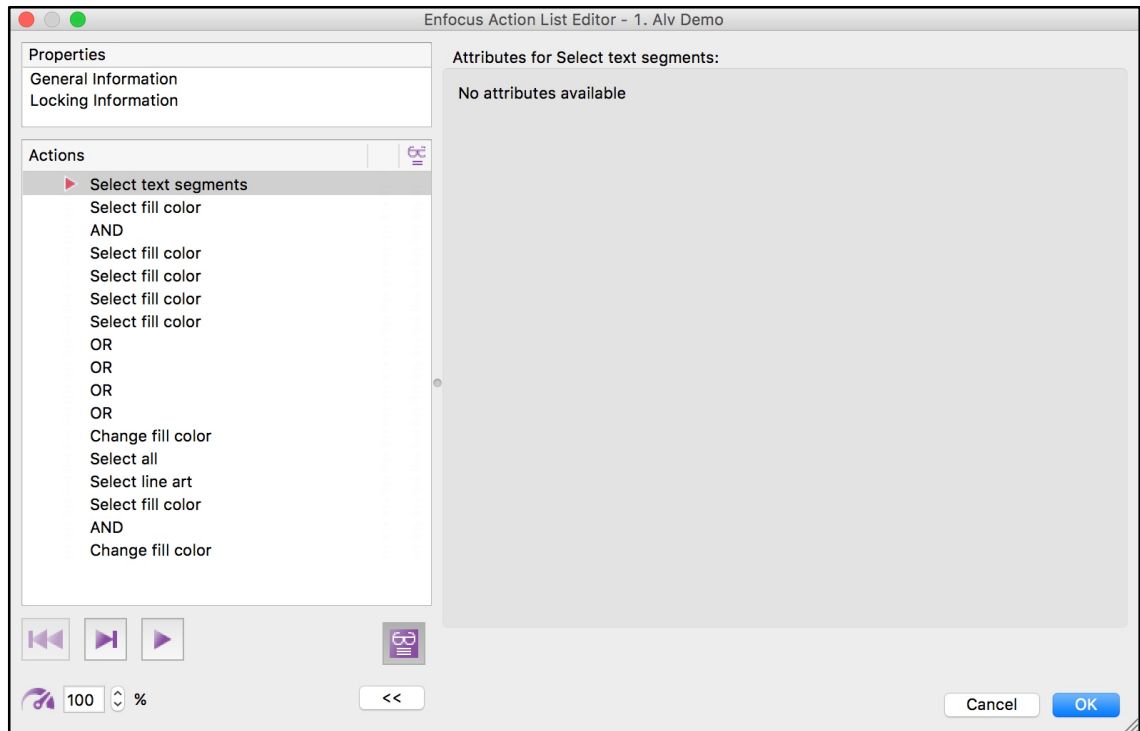
With this PitStop 2018, we aim to help and improve the user experience of working with Action Lists.

We've created an 'Action List Visualizer'. This will enable users to see exactly what Action Lists are doing, and 'Visualize' their behavior on a PDF file.

To start to work with the Action List Visualizer (ALV) you need to have a PDF file open in Adobe Acrobat. You have to then be in the Action List editor and have an open Action List. To start the ALV you need to select the new icon highlighted below.



Once in Visualizer mode you will see a change in the interface, the icon you clicked has now changed to show that you are in Visualizer mode. You can toggle the Visualizer mode on and off using this icon.



Icons explained:

Step through button



This button enables you to manually step through the Action List. As you step through the Actions will be applied and the file will change accordingly. So you can see what is happening.

Play button



This button will actually play the Action List, the Actions will be applied and the file will change accordingly. The speed at which the Action is played will depend upon the value set by the '**Run Speed**'. When an Action is being played, the Play button will change to a pause button enabling you to pause the playback of the Action list. Once paused you could then manually step through if you wish to.

Restart button



This button is greyed out until an Action list is being visualized, when enabled it allows you to restart the visualization and start again from the top of the Action List.

Run Speed



This enables you to set the playback speed if you 'play' the Action List. You can also adjust the speed whilst the Action List is being played.

Hide right hand panel



This button simply opens and closes the right hand panel in the Action List editor to reduce real estate on the page.

In operation.

First Step

I'm now going to step you through the first 3 steps of visualizing my demo Action List. This is the visualization of 'Select text segments'.

I've used the **Step Through** button to move the red arrow to the second element of the Action List, and this then shows the result of first Action.

So you can see that all the text has indeed been highlighted in **Blue**. In case you are wondering the ice cream flavor names on the right are outlined, so not text.

Step 1



The screenshot shows a presentation slide with the following elements:

- Title:** Ice-cream TOP5
- Header:** THE NUMBERS?! (with a red arrow icon)
- Text:** CASE STUDIES AT THE ENFOCUS HEADQUARTERS IN BELGIUM SHOWED A CLEAR TOP 5 ICE CREAM FLAVOURS, WHICH ONE IS YOUR FAVORITE? Let us know via Facebook (@EnfocusSoftware) or Twitter (@enfocussw).
- Flavor Data:**
 - 13% PI
 - 8% STRACCIATELLA
 - 39% VANILLA
 - CHOCOLATE
- ENFOCUS FAVORITES** (at the bottom)
- Enfocus Favorites Window:**
 - Properties: General Information, Locking Information
 - Actions:
 - Select text segments
 - Select fill color (highlighted)
 - AND
 - Select fill color
 - Select fill color
 - Select fill color
 - Select fill color
 - OR
 - OR
 - OR
 - OR
 - Change fill color
 - Select all
 - Select line art
 - Select fill color
 - AND
 - Change fill color

Second Step

In this second step we are now looking at the results of the 'Select fill color' Action. You'll also note that in the visualizer panel there are the familiar **Green** and **Purple** blobs. You can see that the highlighted elements in the PDF are also colored **Green** and **Purple**, and some are in fact colored both **Green AND Purple**. This helps to show you how the selections are made, and the result of the next Action.

Step 2



Ice-cream TOP5

THE NUMBERS?!

CASE STUDIES AT THE ENFOCUS HEADQUARTERS IN BELGIUM SHOWED A CLEAR TOP 5 ICE-CREAM FLAVOURS, WHICH ONE IS YOUR FAVORITE?

Let us know via Facebook (@EnfocusSoftware) or Twitter (@enfocusSWL)

13% PISTACHIO

8% STRACCIATELLA

39% VANILLA

CHOCOLATE

ENFOCUS FAVORITES

Enfocus Action List Editor - 1, Aliv Demo

Properties
General Information
Locking Information

Actions
Select text segments
Select fill color
AND
Select fill color
Select fill color
Select fill color
OR
OR
OR
OR
Change fill color
Select all
Select line art
Select fill color
AND
Change fill color

Third Step

In this third step we are now looking at the result of the **AND** operator on the Action list.

The **Green** and **Purple** blobs have now disappeared and the PDF has elements highlighted in **Blue**.

The **Blue** highlighted elements show the objects that have the attributes of 'text segments' AND have the fill color defined in the second Action.

Step 3



Hopefully that brief overview gives you enough information about how the visualizer works. Now of course we hope you start to play with it and get benefit from it. The visualizer of course also shows the results of fixes and conversions, and will also show the results of any preflight checks you may use in Action Lists.

Other things to know:

Very cool, when in Visualizer mode you can also use the Acrobat Output Preview, the Acrobat layer tools, and in PitStop you can use the PitStop Inspector to select and analyze objects whilst visualizing an Action.

This means you have all the analysis tools available when working with Action Lists.

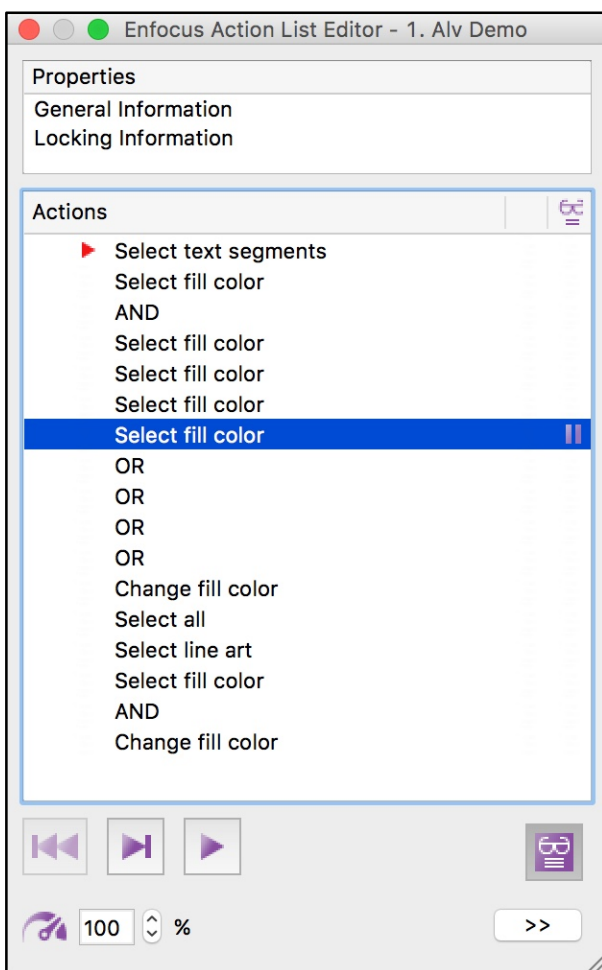
Breakpoints/Pauses

One final thing to mention about the ALV is breakpoints. You can add breakpoints so that the Action List plays until a certain point, and then stops waiting for manual interaction. These breakpoints are visualized as a pause button.

Very useful if you just want to analyze one particular part of an Action List, and don't want to break your fingers manually stepping through it.

If you look at the Screenshot below, you can see a breakpoint has been set by a 'Select fill color' Action.

You can toggle the breakpoints on and off by clicking in the right hand column underneath the ALV icon. That's exactly the same place you see the pause button below.



- **Add Barcode Action**

PitStop Pro and PitStop Server can now support the generation of Barcodes. Over 100 Barcode types are supported including 1D, 2D which includes QA and Datamatrix, many International Postal Barcodes and GS1 barcodes. You can see a full list below. Bar Width reduction is also supported.

This feature will be most powerful when driven with variables. You can turn the variables on by using the 'Action' dropdown menu on the right hand side. We will also supply some standard Action Lists for PitStop Pro that can be driven by manual variables for the barcode value and Bar Width reduction.

Absolute = a value
Relative = a percentage

The Barcode functionality is split over 3 tabs.

Barcode Tab

On this tab you select the barcode type, and the value to be used to generate the barcode. We also have an option with regards to the control number/digit.

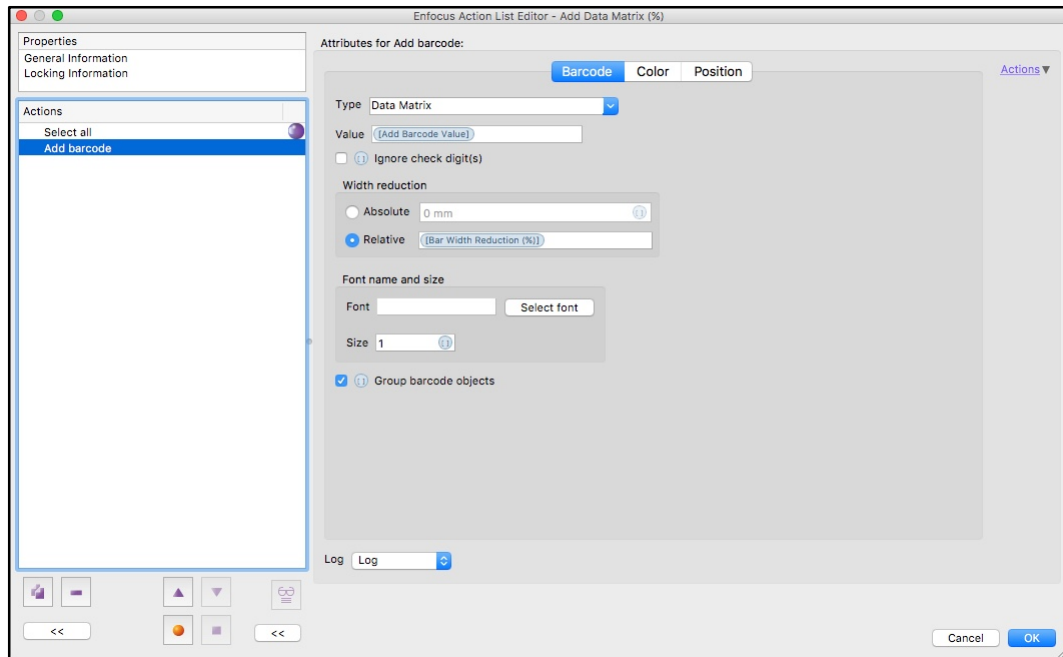
Some barcodes such as EAN8 and EAN13 use the last digit as a control digit, and this is automatically created. However some retailers use this in a non-standard way, and have their own control digit number.

If you turn this option on, the control digit is not generated automatically, and you have to add it in the value string as the last digit.

You also have the ability to set a font and size in the Action. The supplied default Action Lists use Helvetica, as this is present on both Mac and Windows.

Another option is the 'Group barcode objects'. This uses the 'group' functionality in PitStop Pro. What it means is if you select the created barcode in PitStop Pro, it is one object so very easy to select and move around.

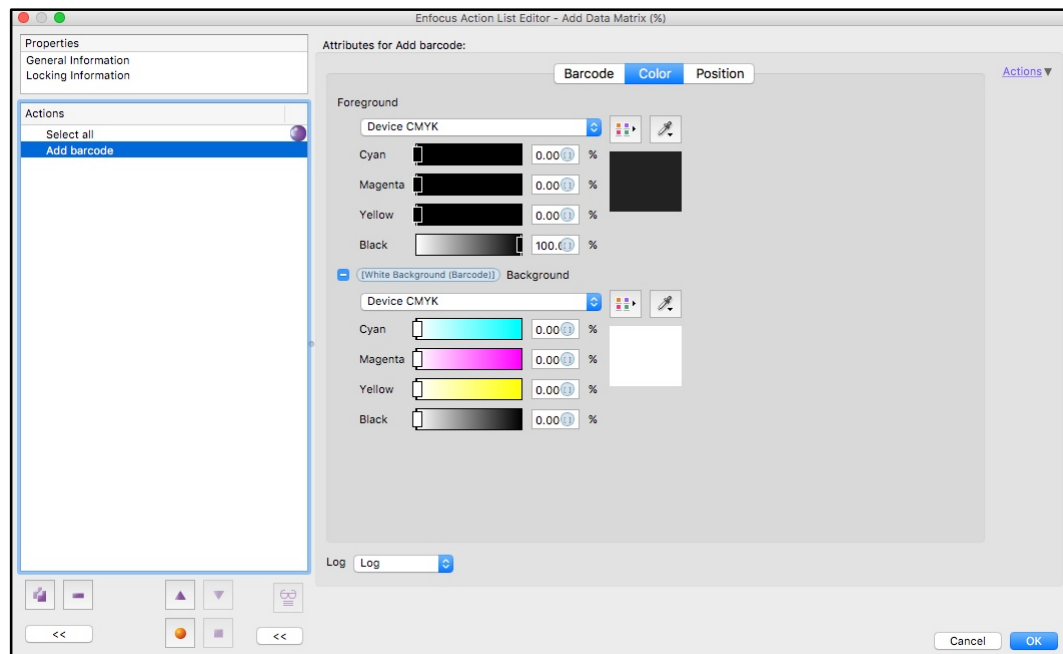
Without a group it consists of individual objects, which is not so user friendly.



Color Tab

On this tab you select the barcode color, and also if you want a background generated for the barcode. If you do want a background you can also select the background color.

You'll see you can select the colorspace and also grab a color if you wish.



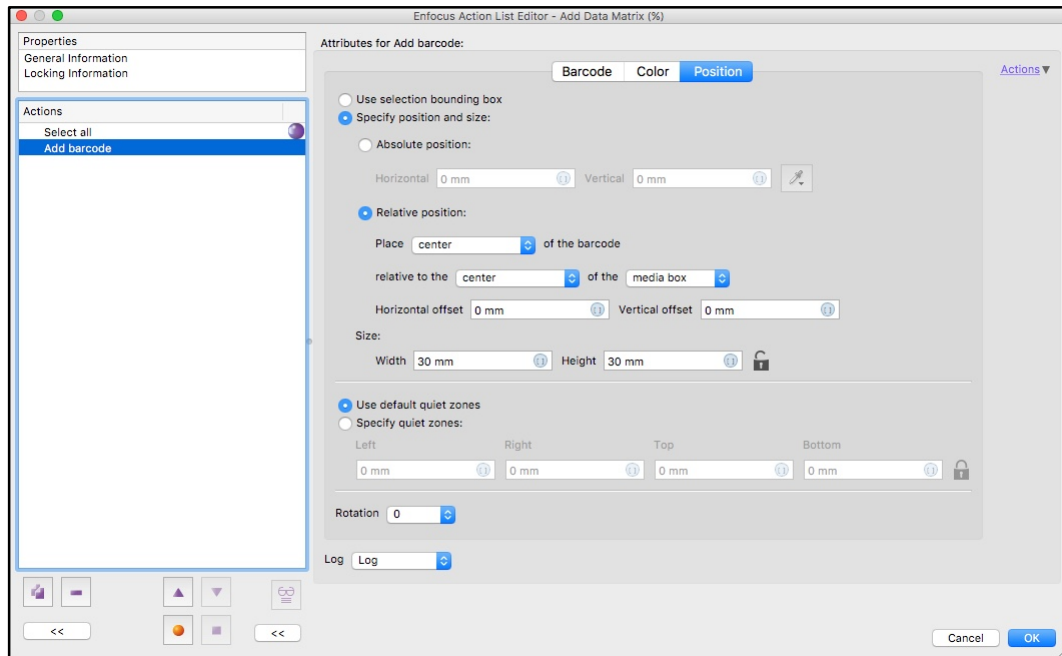
Position Tab

On this tab you can select the size of the barcode, and the position it will be generated at on the PDF file. If you need a specific page then you would use a 'Select page Action' in front of 'Add Barcode'.

The 'User Selection Bounding Box' means you can also select an area or object in

the PDF, such as a box, and the barcode will be generated in that box, and at a size to fit the box. This also takes into account quiet zones and other parameters associated with the barcode type you select.

There is also an option to define your own quiet zone values if you wish.



Supported Barcodes types

1D BARCODES

Code 11	ISBN 13 + 5 Digits	PZN7
Code 2 of 5 Standard	ISMN	Pharmacode Two-Track
Code 2 of 5 Interleaved	Code 93	Code 128 Subset A
Code 2 of 5 IATA	ISSN	Code 128 Subset B
Code 2 of 5 Matrix	ISSN + 2 Digits	Code 128 Subset C
Code 2 of 5 DataLogic	Flattermarken	Code 93 Full ASCII
Code 2 of 5 Industry	Telepen Alpha	ISBN 13
Code 39	UCC 128	EAN 14 (GTIN 14)
Code 39 Full ASCII	UPC A	VIN / FIN
EAN 8	UPC A + 2 Digits	NVE 18
EAN 8 + 2 Digits	UPC A + 5 Digits	Plessey Bidirectional
EAN 8 + 5 Digits	UPC E	Telepen
EAN 13	UPC E + 2 Digits	ITF 14 (GTIN 14)
EAN 13 + 2 Digits	UPC E + 5 Digits	Code 32
EAN 13 + 5 Digits	Plessey	DAFT Code
EAN/UCC 128	MSI	DPD
UPC 12	SSCC 18	HIBC LIC 128
Codabar 2 Widths	Transaction-ID	HIBC LIC 39
Service-ID	LOGMARS	HIBC PAS 128
Code 128	Pharmacode One-Track	HIBC PAS 39
		PZN8

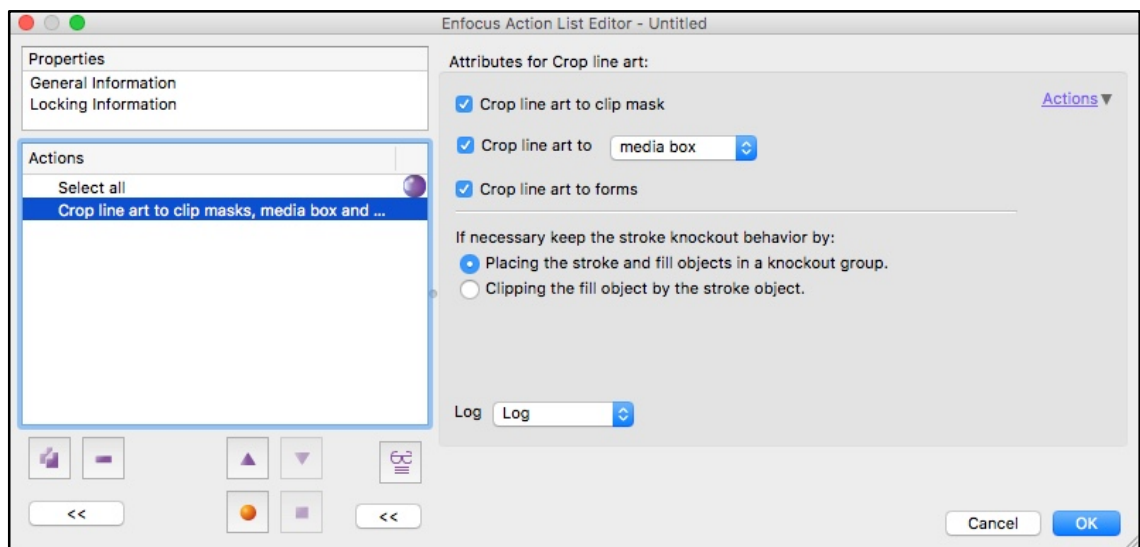
2D BARCODES

Aztec Code	HIBC LIC Codablock-F	HIBC PAS Micro PDF417
Codablock-F	HIBC PAS Codablock-F	HIBC LIC QR-Code
Data Matrix	HIBC LIC Data Matrix	HIBC PAS QR-Code
PDF417	HIBC PAS Data Matrix	DotCode
PDF417 Truncated	HIBC LIC PDF417	Han Xin Code
HIBC LIC Aztec Code	HIBC PAS PDF417	QR-Code
HIBC PAS Aztec Code	HIBC LIC Micro PDF417	Micro PDF417

Micro QR-Code	QR-Code 2005	
POSTAL BARCODES		
DP Leitcode	Australian Post Routing	USPS Intelligent Mail Barcode (IM)
DP Identcode	Australian Post Redirect	USPS PostNet 5 (ZIP)
KIX	PLANET 12 digit	USPS PostNet 6 (ZIP+cd)
Brazilian CEPNet	PLANET 14 digit	USPS PostNet 9 (ZIP+4)
USPS Intelligent Mail Package (IMpb)	Royal Mail 4 State (RM4SCC)	USPS PostNet 10 (ZIP+4+cd)
Japanese Postal	Royal Mail Mailmark 2D (CMDM)	USPS PostNet 11 (ZIP+4+2)
Korean Postal Authority	Royal Mail Mailmark 4-state	USPS PostNet 12 (ZIP+4+2+cd)
Italian Postal 2 of 5	Swedish Postal Shipment Item ID	
Australian Post Custom	UPU S10	
Australian Post Custom2		
Australian Post Custom3		
Australian Post Reply Paid		
GS1 BARCODES		
GS1 DataBar (RSS-14)	GS1 DataBar Truncated (RSS)	GS1 DataBar Stacked Omnidir (RSS)
GS1 DataBar Limited (RSS)	GS1 DataBar Stacked (RSS)	GS1 DataBar Expanded Stacked (RSS)
GS1 DataBar Expanded (RSS)		GS1 128 (EAN/UCC 12)

- **Crop Line Art Action**

This is a new and very powerful Action that will perform a hard crop on selected Line Art elements



You can see the options on how the crop will be done. It can be based on a combination of an existing mask, a page box or a PDF form.

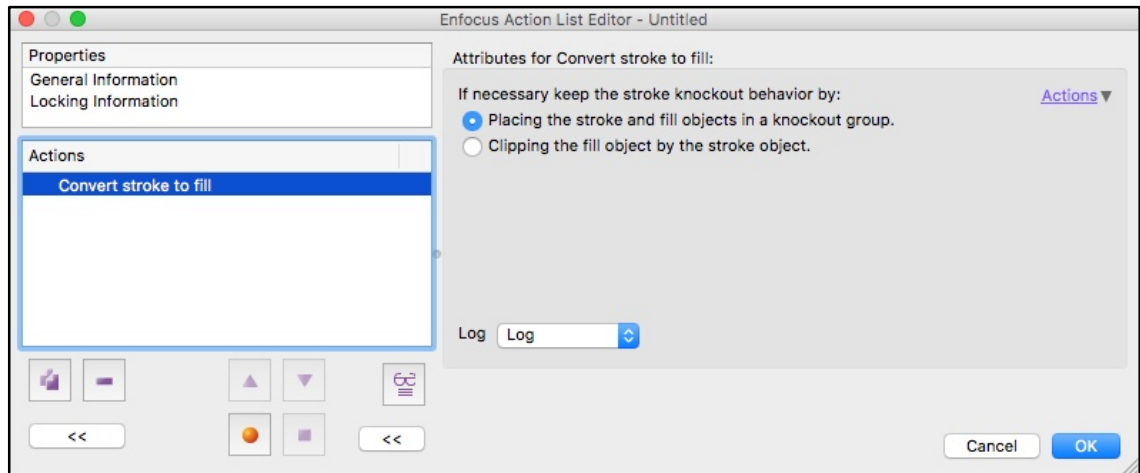
Some cases where a stroke and a fill that are on a single path interact differently than if they were on individual paths. In this Action the strokes get converted to fills so the options allow for extreme cases like these.

The first option of 'Placing the stroke and fill in a knockout group' is the recommended option, as the second option can on certain rare occasions cause

hairline issues.

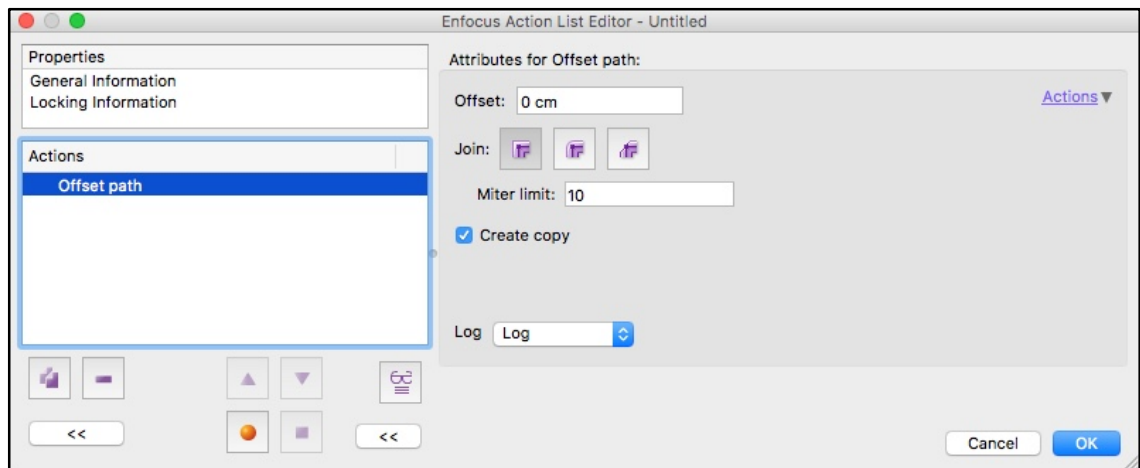
- **Stroke to fill Action**

We are doing a lot of work with line art graphics in this version, this is a very nice Action that converts Strokes to Fills. Strokes are pretty limited as they are simply a line, but when converted to a fill they become a shape, which means other new Actions in this version can then be useful.



- **Offset Path Action**

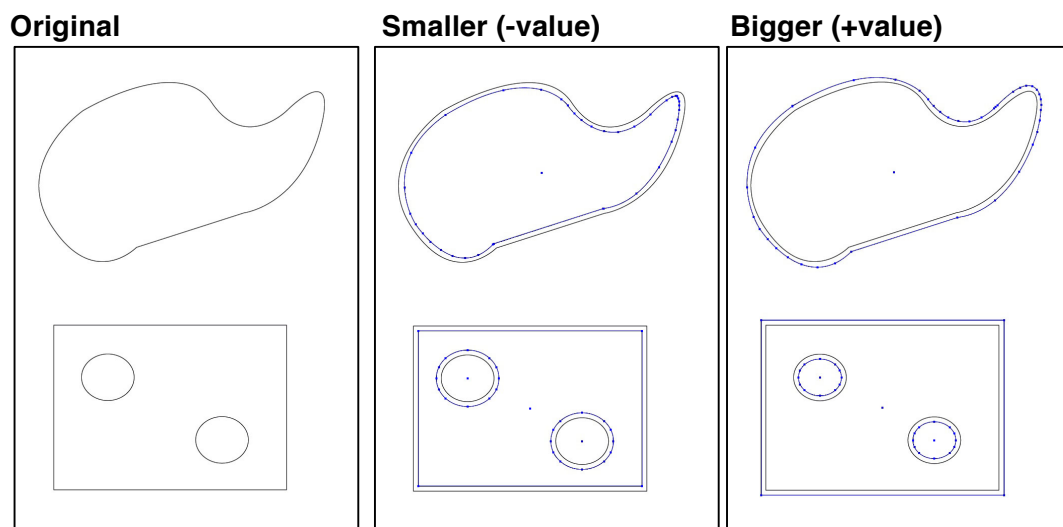
This functionality will be very familiar to anyone who has worked with a design application such as Adobe Illustrator.



It allows you to select paths, including Compound paths and then increase or decrease (choke/spread) the size of the path by a defined positive or negative value. This Action can be done on the original path or on a copy. When working with shapes like cutter guides it makes it easy to create elements like a white underprint, which is slightly smaller in size than the original for registration/trapping purposes.

Although only currently available as an Action, this can be used manually by setting the Action List to Run on 'user selection'.

Here are examples of Offset Path in Action on a Closed Path and a Compound Path.



The effect on the closed path is clear, the copy is a smaller or larger duplicate of the original. For the Compound Path it's more interesting. As the Compound Path effectively has 'holes' in the shape. The holes behave in the opposite way to the outer. So the whole shape effectively gets bigger or smaller.

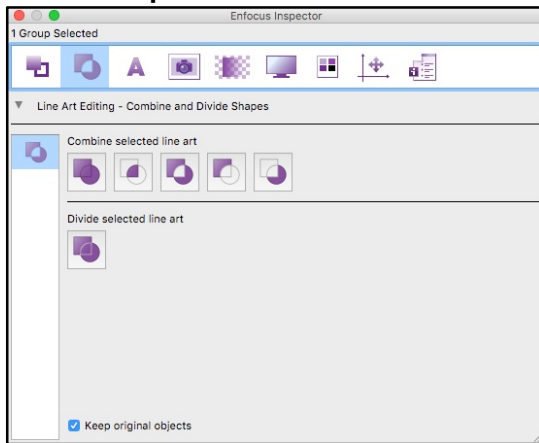
- **Combine and Divide Shapes (Pathfinder Tools)**

Another very familiar Line Art editing concept. We've introduced the ability to combine and divide shapes in PitStop 2018. These new tools allow selected Line Art elements to be Combined or Divided using the options:

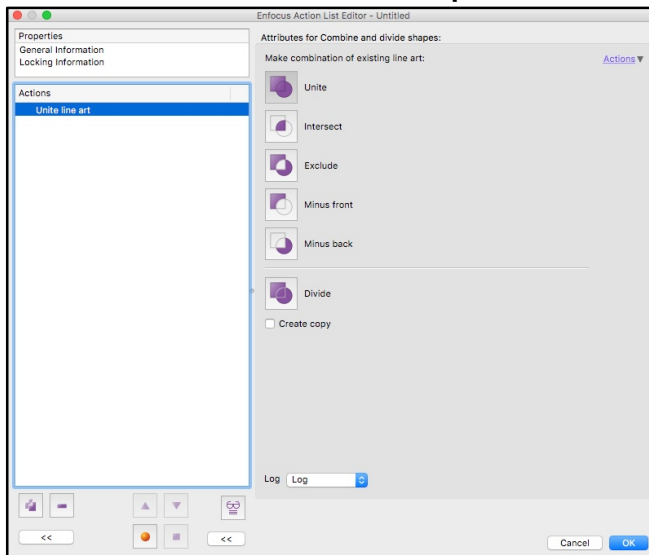
1. Unite
2. Exclude
3. Intersect
4. Minus Back
5. Minus Front
6. Divide

These tools can be accessed in several ways:

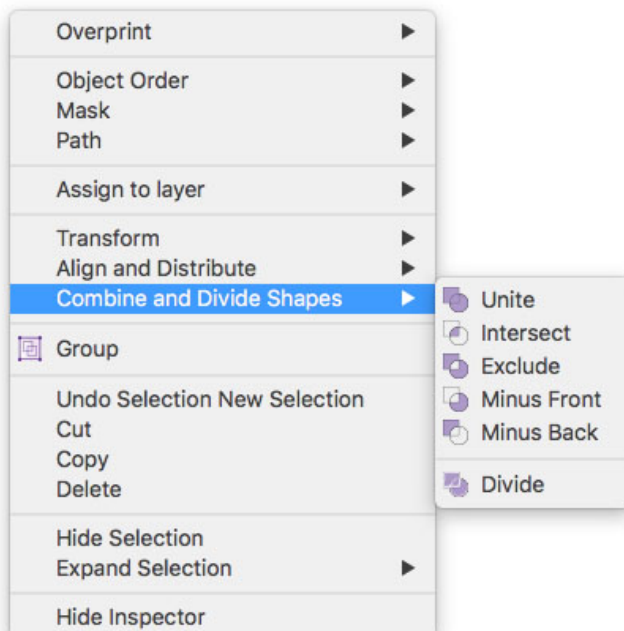
Via the Inspector



Via the Combine and Divide Shapes Action



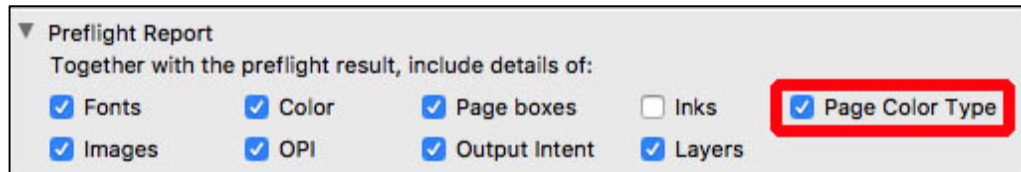
Via a mouse 'right click' when line art objects are selected



- **New Preflight Report Chapter on Color Type of Pages**

Something we've been asked for several times, so the time is now right to bring this to market. This is particularly for customers who need to count clicks when Digital Printing. It's a report on the Color Type of a Page. There are possible 3 options, empty, Black and White, or Color.

The report is on by default and can be turned off in the preflight report options.



The image shows a screenshot of a software interface for preflight report options. It features a section titled 'Preflight Report' with a dropdown arrow. Below the title is the instruction 'Together with the preflight result, include details of:'. There are two rows of checkboxes. The first row includes 'Fonts' (checked), 'Color' (checked), 'Page boxes' (checked), 'Inks' (unchecked), and 'Page Color Type' (checked and highlighted with a red box). The second row includes 'Images' (checked), 'OPI' (checked), 'Output Intent' (checked), and 'Layers' (checked).


The report emulates a DFE and has the following specific handling.

Neutral RGB = Black and White


K only = Black and White

If you wish to add other color handling such as perhaps conversion of 'All' or 'Registration' to K only, then that should be done in the Preflight Profile itself, and the report will display the appropriate Page Color.

Below you can see an example of how the report looks in the standard report. You get a summary for the document, and then an individual color breakdown per page.



enfocus PITSTOPPRO



Page Color Type

Page Color Type Summary:

Number of Empty Pages	4
Number of Black and White Pages	23
Number of Color Pages	11

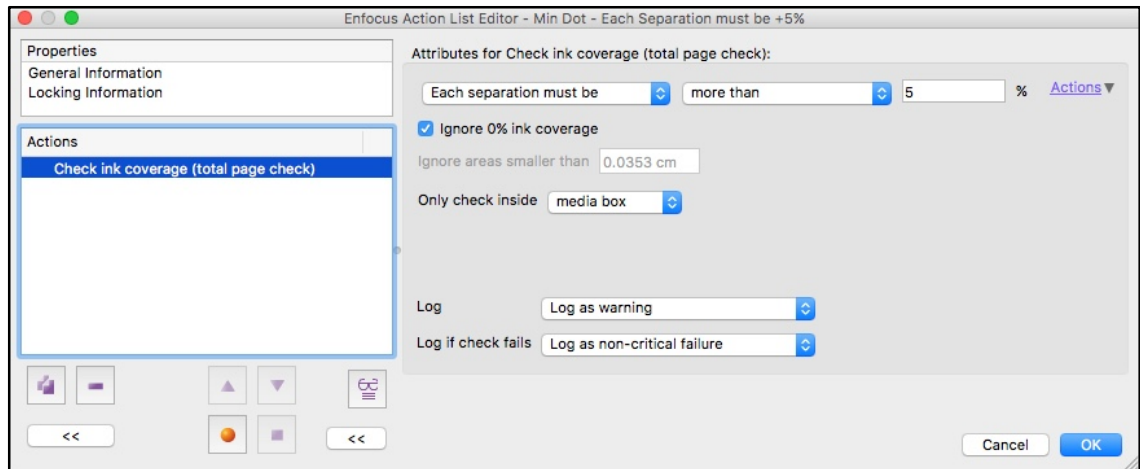
Detailed report:

Page Number	Page Color Type
Page 1	Empty
Page 2	Empty
Page 3	Color
Page 4	Black and White
Page 5	Color
Page 6	Black and White
Page 7	Black and White
Page 8	Black and White
Page 9	Color
Page 10	Color
Page 11	Color
Page 12	Empty
Page 13	Black and White
Page 14	Color
Page 15	Black and White
Page 16	Color
Page 17	Black and White
Page 18	Black and White
Page 19	Black and White
Page 20	Black and White
Page 21	Black and White
Page 22	Color
Page 23	Black and White
Page 24	Black and White
Page 25	Black and White
Page 26	Black and White
Page 27	Black and White
Page 28	Color
Page 29	Color
Page 30	Black and White
Page 31	Black and White
Page 32	Black and White
Page 33	Black and White
Page 34	Color
Page 35	Black and White
Page 36	Black and White
Page 37	Black and White
Page 38	Empty

Report for ADN1737 US-Letter.pdf
 Preflighted on January 31, 2018 by Enfocus PitStop Pro 18 Alpha 1
 Report generated by Enfocus PitStop Pro 18 Alpha 1

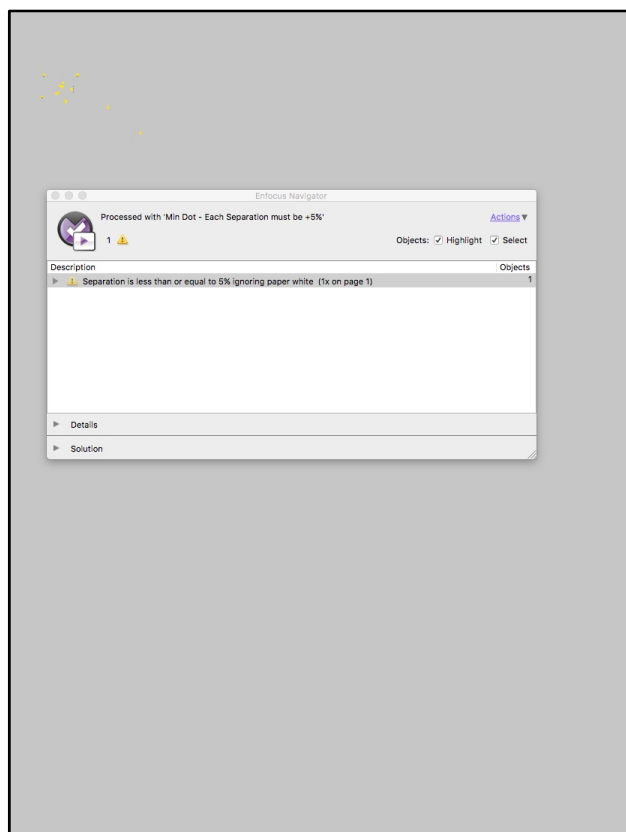
Generated for:
 andrewb@enfocus.com

- **Check for Minimum Printing Dot – Check Ink Coverage Action (Page)**
 We've extended the functionality of the Page based Check for Ink Coverage to now include an individual separation check for a minimum printing dot. This is especially useful for Flexo, but just as useful for other users who want to identify unwanted stray light halftones (sometimes called Scum dots), that can appear on press.



The new options are the ability to specify check per separation and a set of new operators, plus of course the option to ignore 0%. Checking for a minimum dot brings up a heat map as with the original Ink Coverage Check. This check is based on raster images that are created in the background, so elements like overprint and transparency are taken into account.

Here are some examples of a Minimum Dot Preflight Report, this first one is for a hand made PDF file that was created in Photoshop. Some areas of 1-2% were created using a pen/brush tool (top left hand of the page).



This second one is from a packaging file.



What's also nice when viewing this report in the PitStop Inspector is that you can use the eyedropper to go in and look at the specific color breakdown to find the offending separation.

- **Action to Select Black and White objects**

A brand new Action that selects objects that 'look' Black, independent of color space. The selection is based purely on the visual appearance of the object. The idea being such objects can be selected and then converted to true Black and White if needed. In the background the objects are converted to Lab and Chroma is used to detect their color. Your color management settings effect the way the Action works.

As standard the Action will work with all objects, but you can refine that selection with a Select Text Segments, a Select Images or a Select Line Art before the Action with the appropriate operator.

There are two options available via a dropdown, but these only apply to images as they have a range of color. For text and graphics you only need to worry about the slider to set the deviation away from neutral gray.

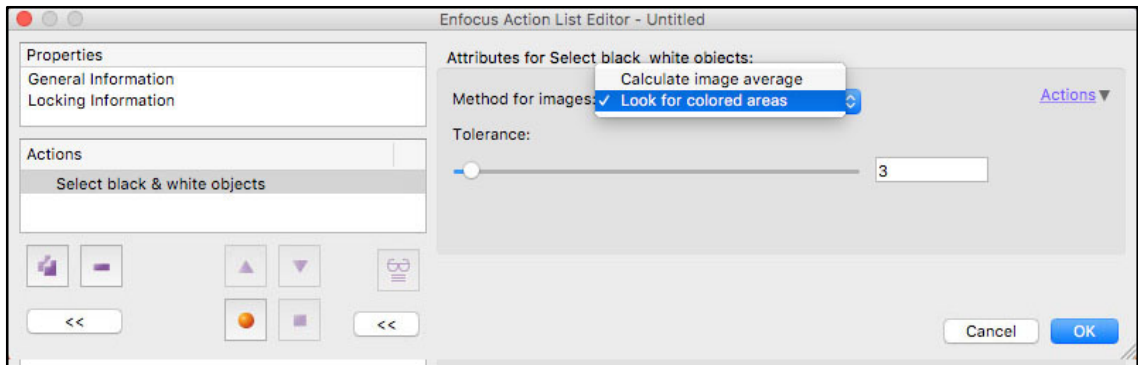
Calculate Image Average.

This works only on images and looks at the total image and it's deviation from a neutral Black and White image. You'll note there is also a tolerance slider so you can set the degree of deviation you deem acceptable. This option could be used for Duotones or Sepia images where they are based on Black, but the image globally has some color in it.

Look for Colored Areas

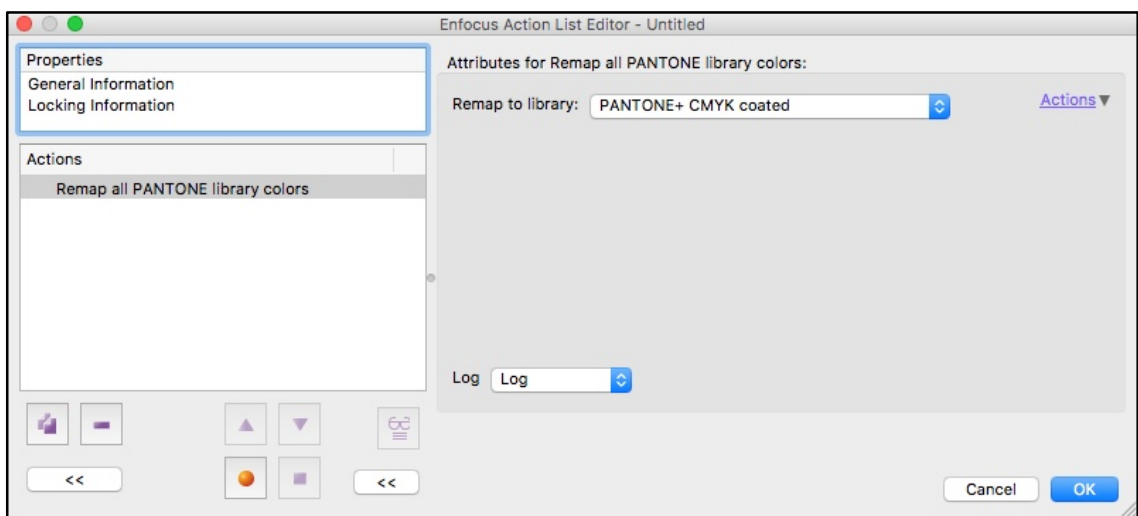
This option is used where an image is mainly Black and White, but it has small areas of color that mean it is not. Again a tolerance slider gives you control over where to set the limits of the selection.

A Zero value in the tolerance slider selects only Black and White images



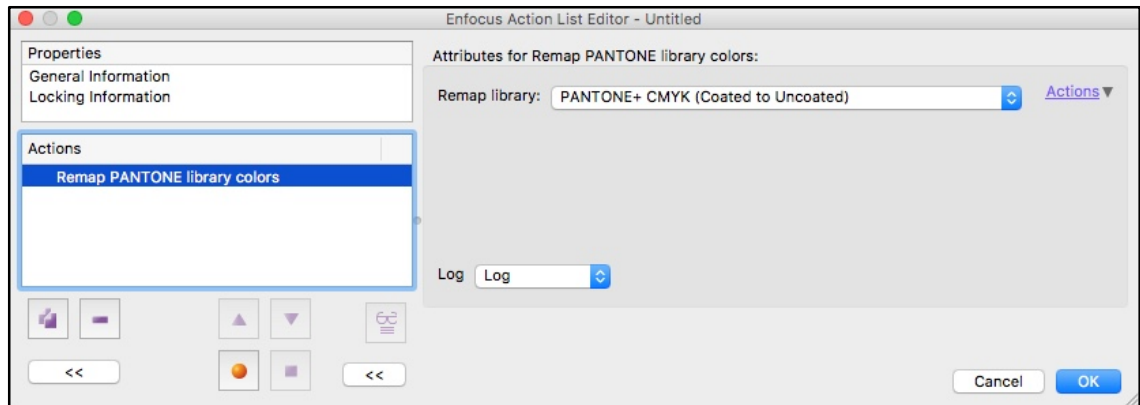
- **Action to Remap all Pantone Colors to a single Library**

This Action looks at the named separations in the PDF file and compares the names found against those of the target PANTONE Library (minus) suffix. If it finds a PANTONE color name it recognizes, it will then map that color name to the one in the library and also change the alternate color space to that of the target library.



- **Action to Remap Pantone Colors between defined Libraries**

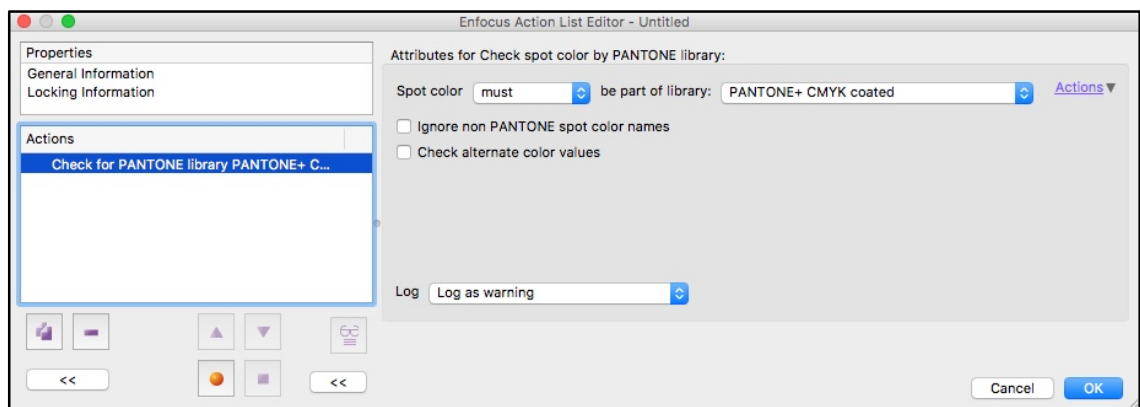
This Action does a similar map to the previous Action, but it has a defined source and target. It maps any Pantone colors that are found from the source library, and maps them to the name and the alternate color space of the target.



- **Action to Check if a Pantone Color is, or is not part of a defined Pantone Library**

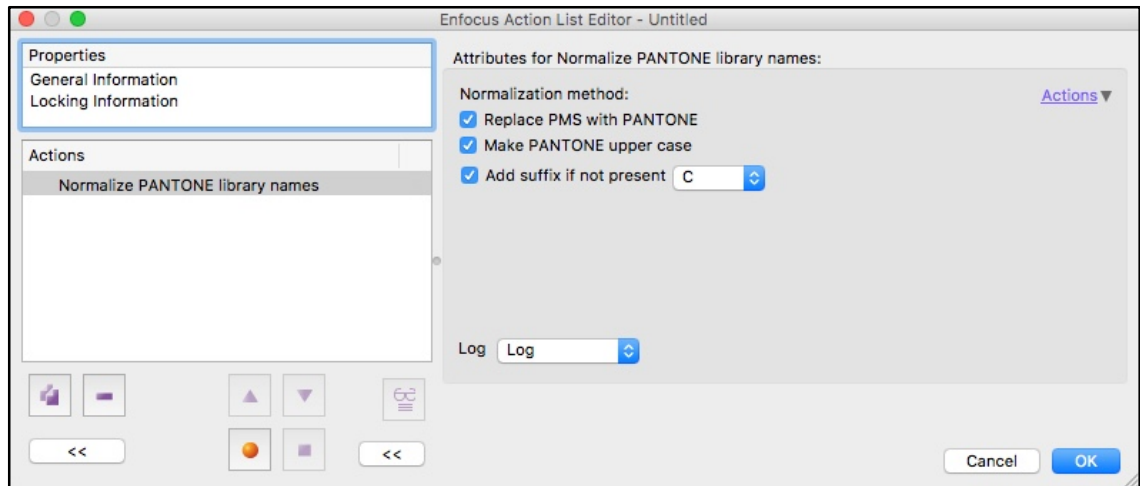
This Action will look at the separation names of colors in a PDF file and then check if they are, or are not part of the defined target PANTONE Library.

You can check just the separation names, or also check the alternate colors as well. There is a further option to ignore non-Pantone names.



- **Action to Normalize Pantone Color names**

Pantone naming conventions are becoming much more important, especially when using lookup tables for color conversions. This Action normalizes Pantone naming conventions, converts the old style 'PMS' to Pantone, converts Pantone to capital letters if required, and can also add a users defined suffix if one is missing.

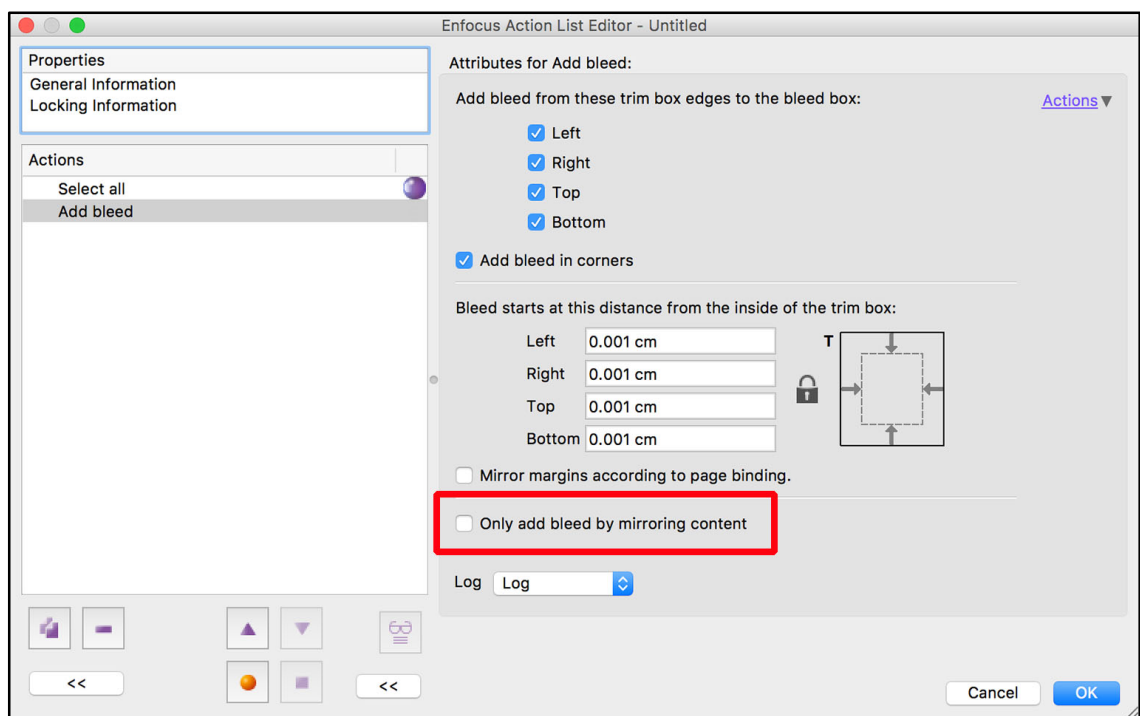


- **Add Bleed Action – Option to Mirror only**

We're aware that Large Format printers find the add bleed very useful when adding extra job data for pockets and hems, but one issue they run into is that the Add Bleed tries to use existing data to add bleed.

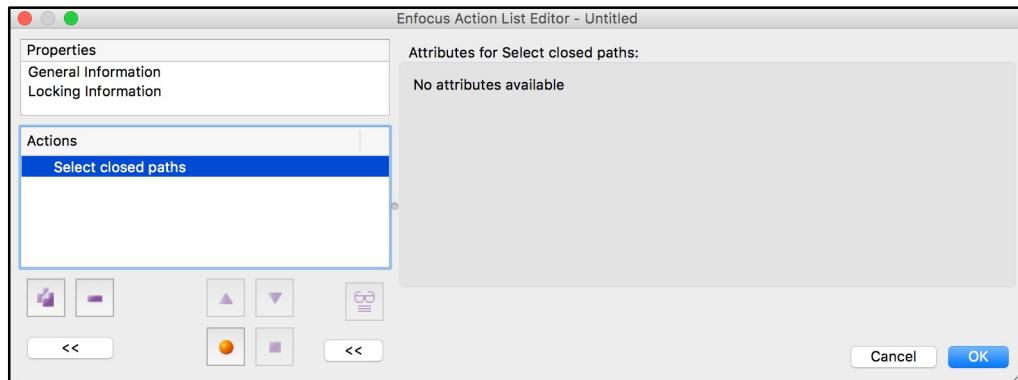
This means they cannot guarantee consistent results.

Therefore to overcome this we added a small option, off by default, to only add bleed by using the mirroring technique.



- **Action to Select Closed Paths**

This Action simply selects closed paths, but when used in conjunction with a 'Select Spot color by list' Action it can be very useful detecting if a path for a cutting table is closed or not.



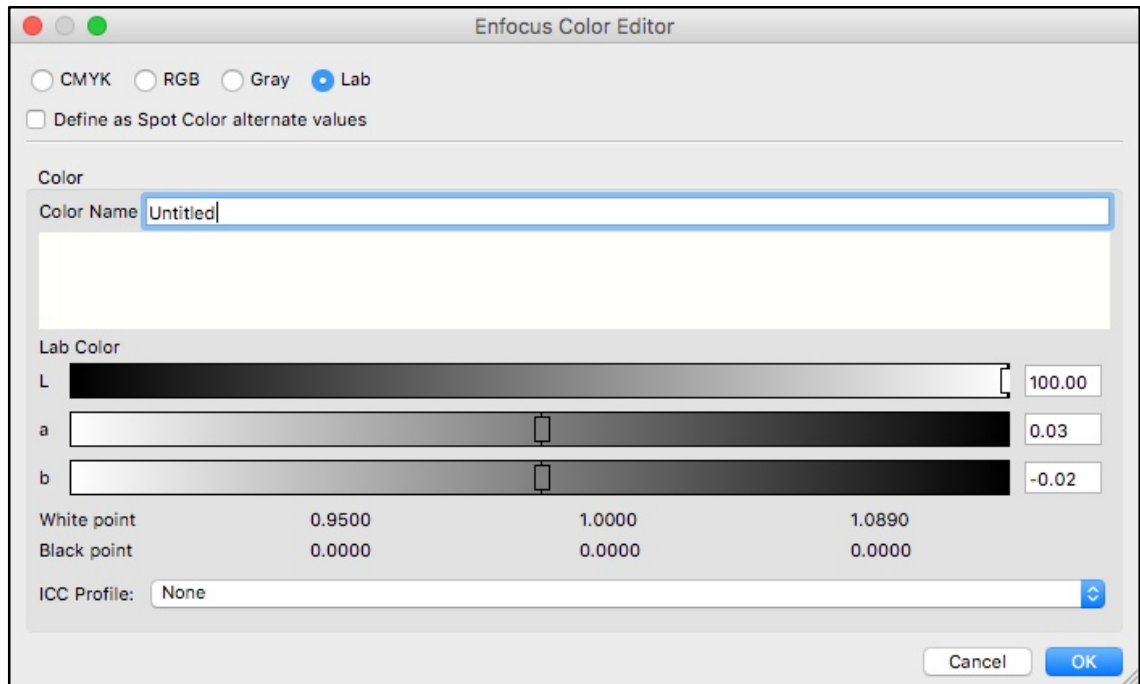
- **Icon/Button for Color Libraries**

A small thing, but very painful previously, you can now access the Color picker/Pantone libraries in PitStop Pro via an icon button. In the past this could take 3-4 clicks.



- **Colors can now be created in Lab**

Spot Colors defined in Lab are a lot more commonplace now thanks to changes in the Pantone libraries. Therefore we added Lab to the color definitions in the color picker so PitStop can now generate colors in Lab or Spot Colors with Lab alternate values.

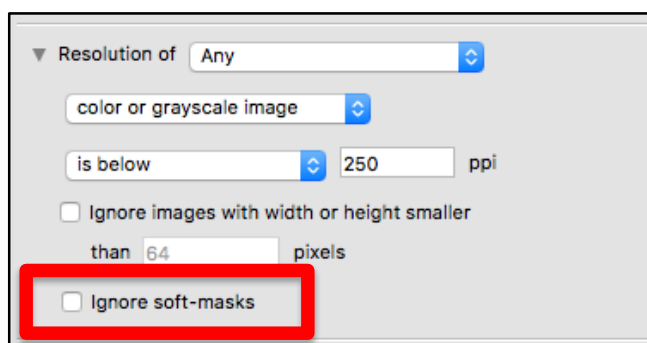


- **Resolution Check to ignore Soft masks (off by default)**

The image resolution check now has a new option in both the Action List and the Preflight Profile editor. This allows the resolution of soft masks to be ignored by the resolution check.

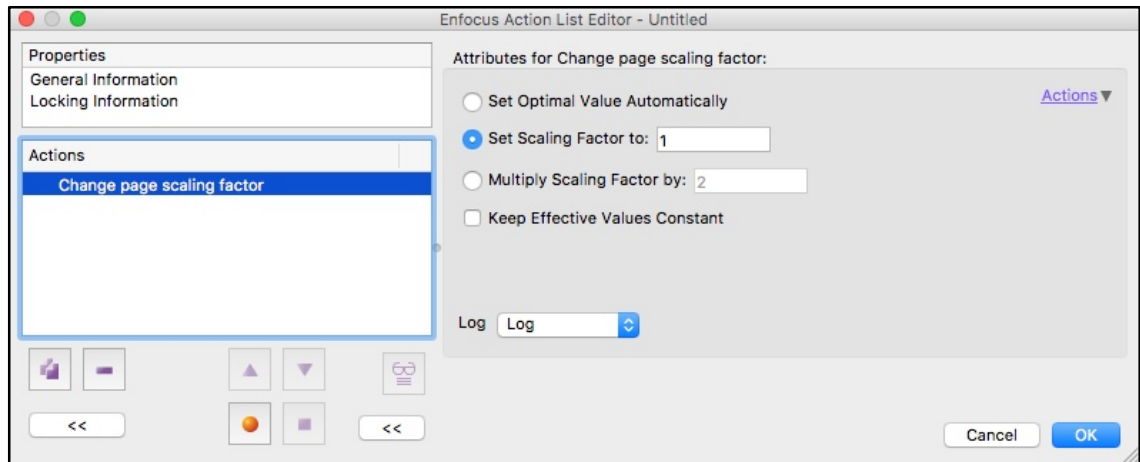
We've seen cases where files are errored because the soft mask resolution is too low, but the actual image itself is ok. Drop Shadows and transparency effects in Adobe Indesign are good examples of this.

This as you can imagine creates a lot of confusion, so having this new option is a good idea.



- **Change Page Scaling Factor (UserUnit)**

User units or Page Scaling are a way of creating a PDF that is bigger than the 200 x 200 inch limit of the PDF specification. These UserUnits are particularly useful for large and Grand format printing.



There are four options in the Action:

Set Optimal Value Automatically

This option automatically resizes an oversized PDF to within the 200 x 200 inch limit of the PDF specification, and applies the appropriate page scaling factor to maintain the original output size.

There are several applications that are capable of making oversized PDF files, probably the most well-known one is Coreldraw.

Set Scaling Factor to

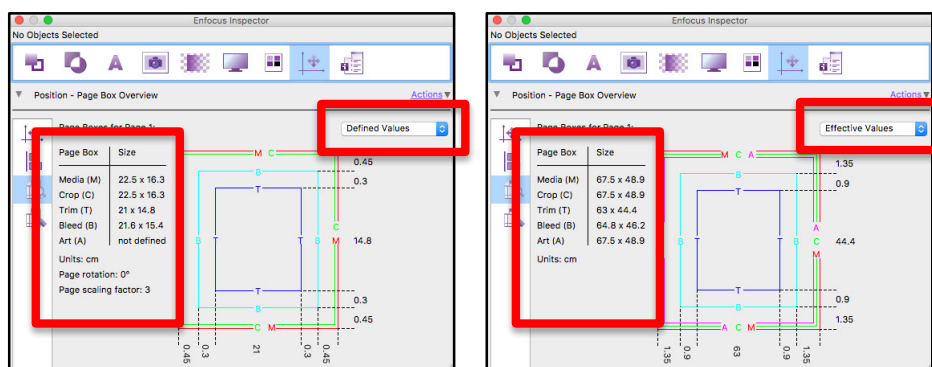
This applies the defined page scaling factor to the file

Multiply Scaling Factor by

This multiplies the current page scaling factor by the defined value.

Keep Effective Values Constant

Within PDF, especially with UserUnits you have the concept of 'defined size' and 'effective size'. You can easily see these displayed in the PitStop Inspector.



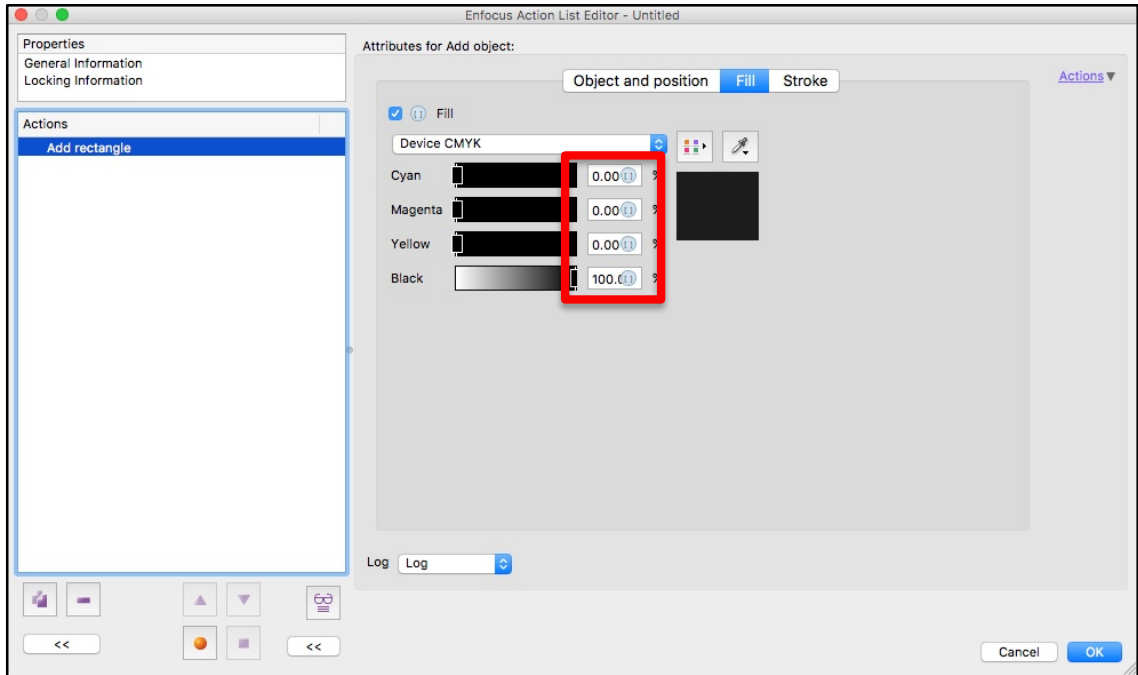
Enabling this option means that when a page scaling factor is applied, the effective (output size) is not changed.

- **Color values via Variables**

The support for variables has now been extended to color values, these are available everywhere a color value is used in an Action List and variables are

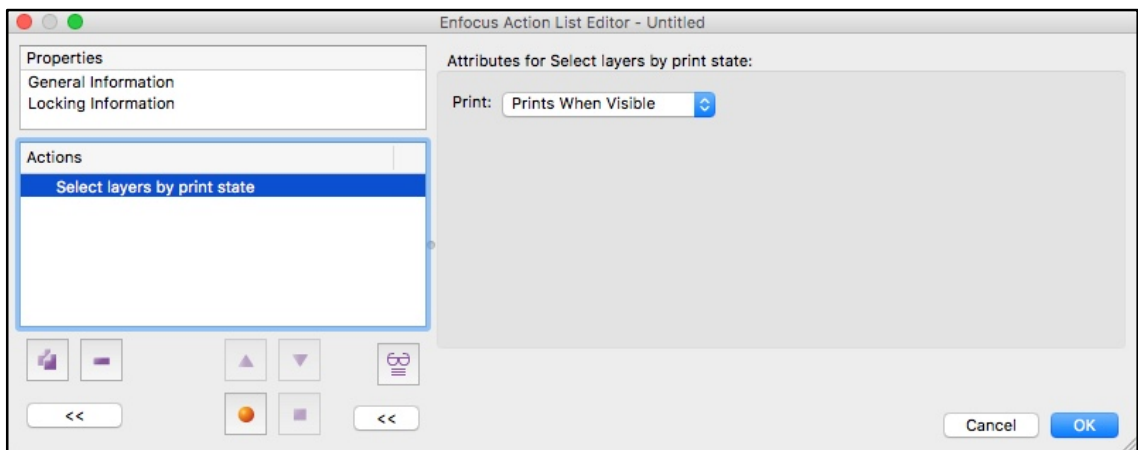
available for all color spaces. You will require a separate variable for each color channel.

You'll need to turn the variable options on via the 'Actions' dropdown so the variable widget becomes available.



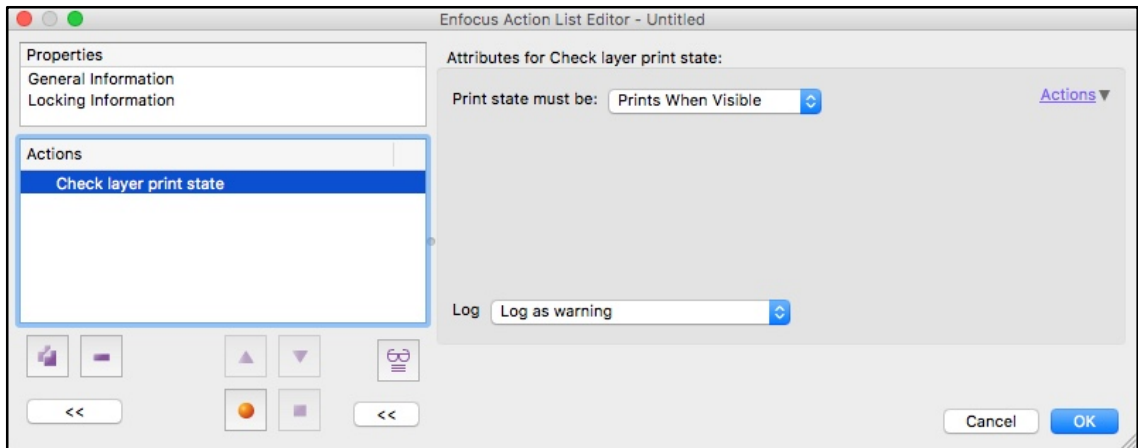
- **Action to Select Layer by Print State**

We've added several new Actions relating to the layer 'Print State'. This first one selects layers by their print state.

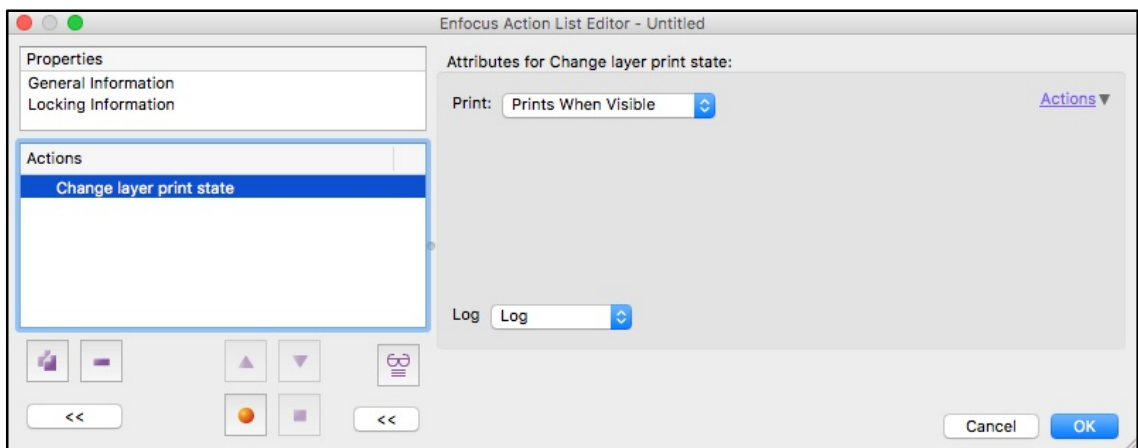


- **Action to Check Layer by Print State**

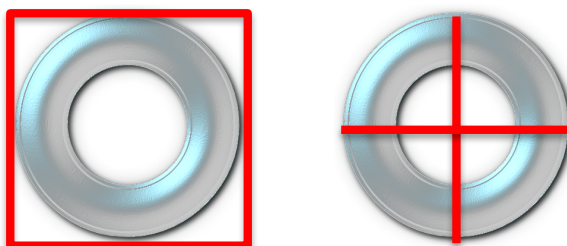
This Action allows you to check the 'Print State' of layers.



- **Action to Change Layer Print State**
The final Action in the set allows you to change the 'Print State' of layers



- **Change to Add Copy Graphic – Position from Center of Graphic**
We've created a new option for the Add Copy Graphic Action, this will be very useful for people who use this Action for Grommets or adding drill holes. The new Action allows the position of the graphic to be defined by the center of the graphic. So you can see why it's important for grommets and drill holes, as they need to be placed based upon the center of the hole.
Without the option on the graphics are placed according to their bounding box.



Attributes for Add copied graphics:

Graphics Attributes Region **Repeat** Position [Actions](#) ▼

Horizontal:

Repeat:

Number of Columns:

Use center of the object for margin

Vertical:

Repeat:

Distribute:

Minimum distance:

Use center of the object for margin

Log

New Enfocous/XRite Devicelink Profiles

- **PitStop 2018 now includes the following new Devicelink Profiles and Action Lists**

Third-Party:

Devicelink: eciCMYK (Fogra 53) to PSO Coated v3
Devicelink: eciCMYK (Fogra 53) to PSO Uncoated v3
Devicelink: ISO Coated v2 to eciCMYK (Fogra 53)

Australia:

Convert: ISOCoatedv2-3DAP_PAPERTYPE-3_280%
Reduce-3DAPv3_PAPERTYPE-1-300%TAC
Reduce-3DAPv3_PAPERTYPE-3_280_F45-280%TAC
Reduce-3DAPv3_PAPERTYPE-4_270_F47-270%TAC

Newspaper:

Reduce-ISOnewspaper26v4-230%TAC
Reduce-WAN-IFRAnewspaper26v5-220%TAC

New Output Intents

- **PitStop 2018 now includes the following new Output Intents**

Europe: Fogra 53
Fogra 54

USA: CGATS21_CRPC1.icc
CGATS21_CRPC2.icc
CGATS21_CRPC3.icc
CGATS21_CRPC4.icc
CGATS21_CRPC5.icc
CGATS21_CRPC6.icc
CGATS21_CRPC7.icc
GRACoL2013_CRPC6.icc
GRACoL2013UNC_CRPC3.icc
SWOP2013C3_CPRC5.icc

New Standard Action Lists

Add

Add Crop Marks - variable offset from Trim Box

Pantone

Check Pantone Spot Colors against Pantone+ Solid Coated v3 (CMYK)
Check Pantone Spot Colors against Pantone+ Solid Coated v3 (Lab)
Check Pantone Spot Colors against Pantone+ Solid Uncoated v3 (CMYK)
Check Pantone Spot Colors against Pantone+ Solid Uncoated v3 (Lab)
Normalize all Pantone Color names and add 'C' if suffix missing
Normalize all Pantone Color names and add 'U' if suffix missing
Normalize all Pantone Color names and add 'UP' if suffix missing

Normalize all Pantone Color names and add "CP" if suffix missing
Remap all Pantone Spot Colors to Pantone+ Solid Coated v3 (CMYK)
Remap all Pantone Spot Colors to Pantone+ Solid Coated v3 (Lab)
Remap all Pantone Spot Colors to Pantone+ Solid Uncoated v3 (CMYK)
Remap all Pantone Spot Colors to Pantone+ Solid Uncoated v3 (Lab)

Large or Grand Format

Check Cutter Guide is a closed path
Change Page Scaling factor to 2 (Userunit)
Add the appropriate user unit if the page size exceeds the PDF Specification

Re-arrange Printers Pairs

4pp Re-order
8pp Re-order
12pp Re-order
16pp Re-order
20pp Re-order
24pp Re-order
28pp Re-order
32pp Re-order

Prepress

Clean Up Content
Min Dot - Each Separation must be +5%

Layers

Change all Layers to 'Print when Visible'
Check for Layers set to 'Never Print'

Barcodes

Barcodes with Bar Width Reduction as a value
Add EAN-8 Barcode (value)
Add EAN-13 Barcode (value)
Add Code 128 Barcode (value)
Add Code 39 Barcode (value)
Add ITF-14 Barcode (value)
Add UPC-A Barcode (value)
Add UPC-E Barcode (value)
Add QR-Code (value)
Add Data Matrix (value)

Barcodes with Bar Width Reduction as a %
Add EAN-8 Barcode (%)
Add EAN-13 Barcode (%)
Add Code 128 Barcode (%)
Add Code 39 Barcode (%)
Add ITF-14 Barcode (%)
Add UPC-A Barcode (%)

Add UPC-E Barcode (%)
Add QR-Code (%)
Add Data Matrix (%)

Devicelinks

TAC Reduction
Reduce-3DAPv3_PAPERTYPE-1-300%TAC
Reduce-3DAPv3_PAPERTYPE-3_280_F45-280%TAC
Reduce-3DAPv3_PAPERTYPE-4_270_F47-270%TAC
Reduce-WAN-IFRAnewspaper26v4-230%TAC
Reduce-WAN-IFRAnewspaper26v5-220%TAC

Convert
ISOCoatedv2-3DAP_PAPERTYPE3_280%

Updated or Improved Action Lists

Add copied Graphic

Other new information

- **Pantone Libraries now included in PitStop Server**
The Pantone Color Libraries are included, but not accessible by the user.
The Libraries are there as a reference for the new Pantone Library based Action lists for checking, fixing and mapping Pantone names and alternate colors.

New added ICC Profiles

CGATS21_CRPC1.icc
CGATS21_CRPC2.icc
CGATS21_CRPC3.icc
CGATS21_CRPC4.icc
CGATS21_CRPC5.icc
CGATS21_CRPC6.icc
CGATS21_CRPC7.icc
GRACoL2013UNC_CRPC3.icc
SWOP2013C3_CRPC5.icc
SWOP2013C5.icc
eciCMYK.icc (Fogra 53)
PSOsc-b_paper_v3_FOGRA54.icc

Important Fixes

The following customer reported bugs have also been resolved with this update. If you reported one of these bugs it would be helpful if you could verify that it has been fixed on your system.

Log Number	Description
ENFP-5047	PitStop Server configurator does not see Action Lists or Preflight Profile added to new Databases
ENFP-5716	Files not going to problem jobs when no outgoing connection accepts job
ENFP-5616	PitStop Pro 2017 font outline issue: distorted letter
ENFP-5775	Editing Text in the General section of a Hot Folder jumps around
ENFP-5812	Creating a low res annotated report from this file makes PitStop Server crash.
ENFP-5851	PitStop Pro 2017, update 1 doesn't correctly mask around the trimbox
ENFP-5849	The Select page size Action always first converts to portrait, then checks with and height
ENFP-5852	PitStop Pro 2017, update 1 crashes when adding a mask to this file
ENFP-5859	Action Lists using page sizes don't work if the width is more than the height.
BZ33587	Windows 10, log in with a different local admin account and the local, default presets folder will not be available anymore
ENFP-5877	Make mask behavior changed in PitStop Pro 2017.1
ENFP-5945	PitStop Workgroup Manager crashed due to corrupt configuration file
ENFP-5891	Page box view disappears when you save or save as in Acrobat
ENFP-5752	Objects that preview transparent in Acrobat are not and remove irrelevant objects under them
ENFP-6026	Wrong description of "contains" in the Select by document info action
ENFP-6114	Action to change the character spacing does not allow negative values
ENFP-5940	Strange line width for distorted lines
ENFP-6011	Clean install of PitStop Server on Windows 7 and Windows server 2008 R2 fails
ENFP-5692 ENFP-5753	Irrelevant Objects Action List makes Acrobat crash when strokes with circular paths are used
BZ30630	Select all spot colors also converts non spot elements