

Impostrip UICL Integration v1.00

Description

The **Impostrip UICL Integration app** allows you to use the complete functionality offered by the optional UICL interface of Ultimates Impostrip Automation and Scalable. It also allows the installation of Impostrip on a different machine than the Switch Server and is localized in English and German. The advantage of this app over the Impostrip Redirection Interface is, you can control Impostrip using the UICL interface. This sets you in control of nearly all ImposStrip features. Everything you used to set up in the hotfolders can be directly set in your Switch flow and there is no need of a hotfolder configuration anymore. Here are some of the parameters you can control directly from your flow:

- the output format (pdf or jdf)
- defining the page range of the submitted PDF
- setting up simplex or duplex
- selecting the binding method (includes control over the booklet maker)
- selecting the mark profiles
- selecting the banner profiles
- and many more parameters are available in the expert settings

Compatibility

Switch 13 update 1 and higher.

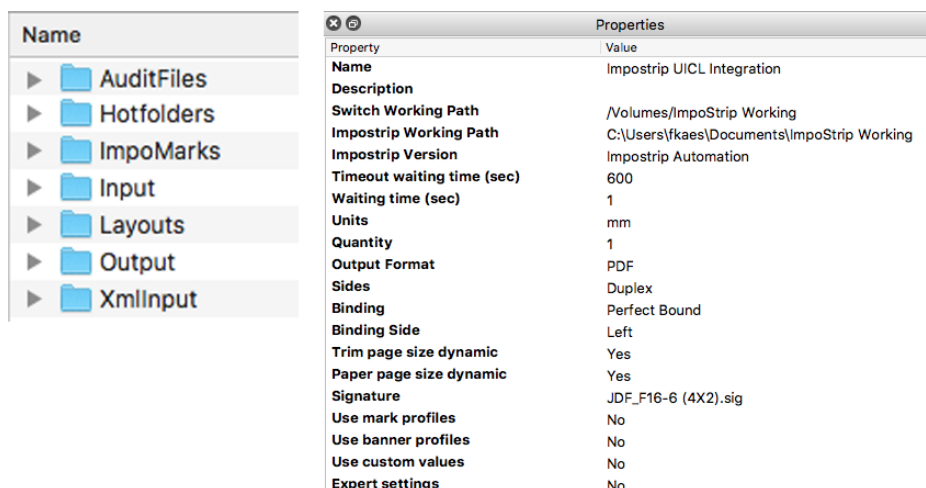
Compatibility third-party applications

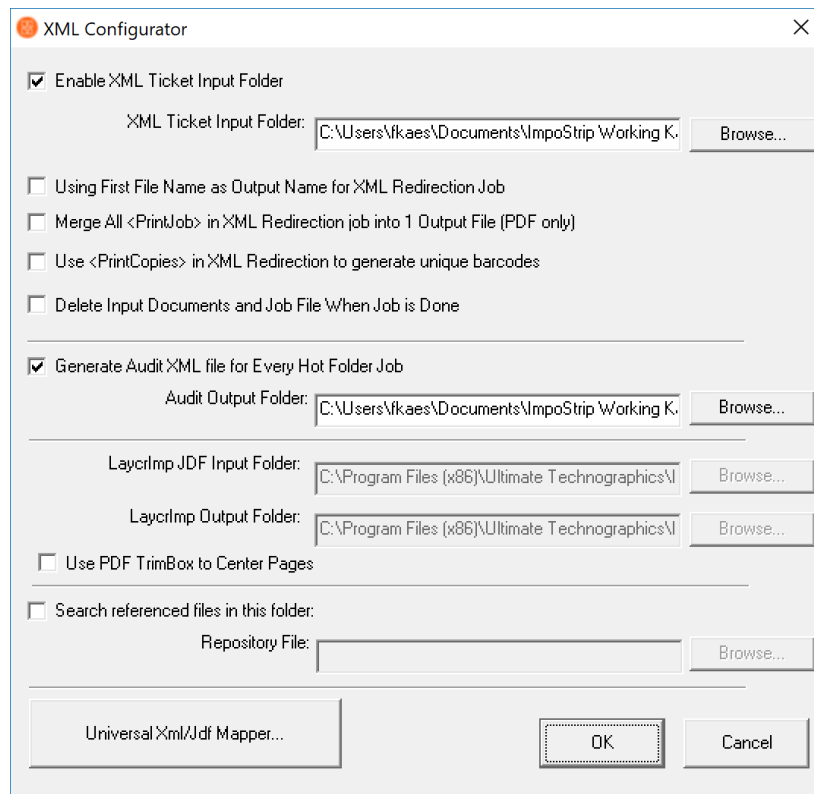
Ultimate Impostrip Automation, Ultimate Impostrip Scalable **with UICL extension!**

Application discovery details

Impostrip UICL Integration communicates with Impostrip over the folder architecture of Impostrip. The Impostrip root folder can be selected within the app. The screenshots show the properties, the XML setup in Impostrip and the necessary folder architecture.

This folder architecture can reside in the application folder, where most of the folders already exist (this is the best place to start) or can be moved to any other place afterwards (make sure to modify the folder paths in Impostrip as well).

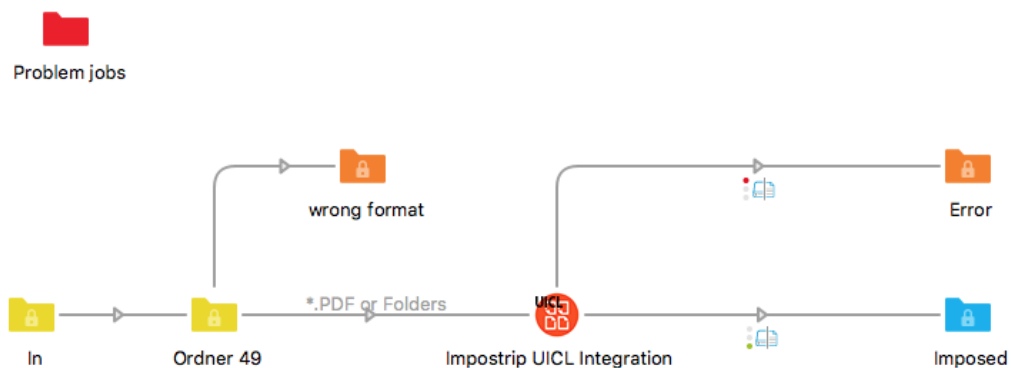




Connections

The Imposstrip UICL Integration app uses TrafficLight outgoing connections. The processed job is routed according to its status (Success or Error). The created Audit-XML file is routed via the log connection.

The following screen shot demonstrates how the Imposstrip UICL Integration app can be integrated in a Switch flow.



Properties detailed info

Property	Value
Name	Impostrip UICL Integration
Description	
Switch Working Path	/Volumes/ImpoStrip Working
Impostrip Working Path	C:\Users\fkaes\Documents\ImpoStrip Working
Impostrip Version	Impostrip Automation
Timeout waiting time (sec)	600
Waiting time (sec)	1
Units	mm
Quantity	1
Output Format	PDF
Sides	Duplex
Binding	Perfect Bound
Binding Side	Left
Trim page size dynamic	Yes
Paper page size dynamic	Yes
Signature	JDF_F16-6 (4X2).sig
Use mark profiles	No
Use banner profiles	No
Use custom values	No
Expert settings	No

Flow elements properties

- Switch working path:
 - Path to the Impostrip root folder seen from the Switch Server
- Impostrip working path:
 - Path to the Impostrip root folder seen from Impostrip
 -
- Impostrip version:
 - Used Version of Impostrip (Automation or Scalable)
- Timeout waiting time:
 - Time the app waits for the imposed job before a timeout occurred
- Waiting time:
 - Time Impostrip waits before starting to process the job
- Units:
 - Units used in the app
- Quantity:
 - Number of impositions of the job file. When multiple PDFs are handed over in a folder differing numbers of copies can be set for each single PDF by adding #<number of copies> as a suffix to the *NameProper*. Jobs without this suffix will use the “Quantity” value.

E.g. the quantity value is set to “5”, two files in a folder are handed over with the jobnames `myFirstJob_#100.pdf` and `mySecondJob.pdf`. This will result in imposing *myFirstJob* a hundred times and *mySecondJob* five times.

- Output format:
 - Output PDF or JDF
- Sides:
 - Sides to output (Simplex or Duplex)
- Binding:
 - Binding method
- Binding side:
 - Binding side left, right, top, bottom
- Trimbox page size dynamic:
 - Control of the trimbox size
- Paper page size dynamic:
 - Control of the paper size
- Signature:
 - The name of signature used to impose the job
- Use mark profiles:
 - Control of the mark profiles
- Use banner profiles:
 - Control of the banner profiles
- Custom values:
 - hands over variable data for barcodes and text elements to Imposstrip. Syntax used for this is `<variable defined in Imposstrip>TAB<value>CR`, e.g.

```
myJobname      [job.getNameProper]
myJobnumber    12-3456
```

- Expert settings:
 - Additional settings to overwrite the setup defined in the signature

Expert Settings	Yes
<i>Docs as Independent Job</i>	No
<i>Add Blank Pages</i>	No
<i>Output all pages</i>	Yes
<i>Edit Marks</i>	No
<i>Adjustements</i>	No
<i>Change Gutters</i>	No
<i>Change Margins</i>	No
<i>Default PDF Box</i>	trimbox
<i>PDF Page Alignment</i>	center
<i>Mockup</i>	No