

## Impostrip Redirection Integration v2.00

### Description

The **Impostrip Redirection Integration app** allows you to use the complete functionality offered by the free of charge XML Redirection interface of Ultimates Impostrip Automation, Impostrip 2019 and Scalable. This improves the flexibility and allows individual settings on per job base. It also allows the installation of Impostrip on a different machine than the Switch Server and is localized in English and German.

The advantages of this app compared to the build-in-version are, that the following parameters can be controlled directly from within your flow:

- handing over custom values to Impostrip
- defining the page range of the submitted PDF
- changing the paper size, the page size, the gutters and the margins
- adding blank pages
- adding a LayoutID
- adding an additional mark or barcode

### Compatibility

Switch 2017 update 2 and higher.

#### Compatibility third-party applications

Ultimate Impostrip Automation, Impostrip 2019, Impostrip Scalable

#### Application discovery details

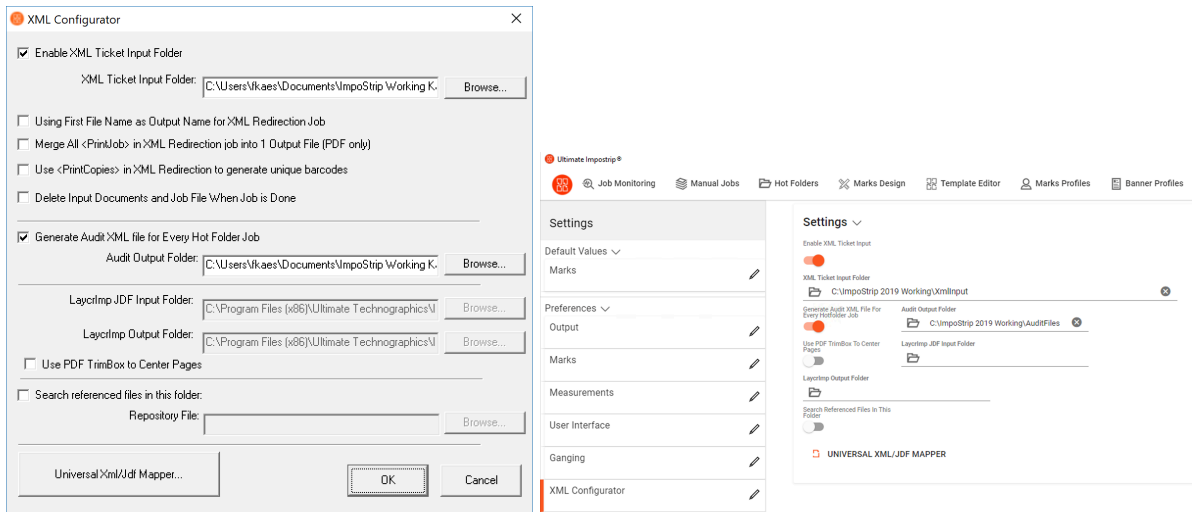
Impostrip Redirection Integration communicates with Impostrip over the folder architecture of Impostrip. The Impostrip root folder can be selected within the app. The screenshots show the properties, the XML setup in Impostrip and the necessary folder architecture.

This folder architecture can reside in the application folder, where most of the folders already exist (this is the best place to start) or can be moved to any other place afterwards (make sure to modify the folder paths in Impostrip as well).

Name	Value
▶ AuditFiles	
▶ Hotfolders (Legacy only)	
▶ ImpoMarks (Legacy only)	
▶ Input	
▶ Layouts (Legacy only)	
▶ Output	
▶ XmlInput	

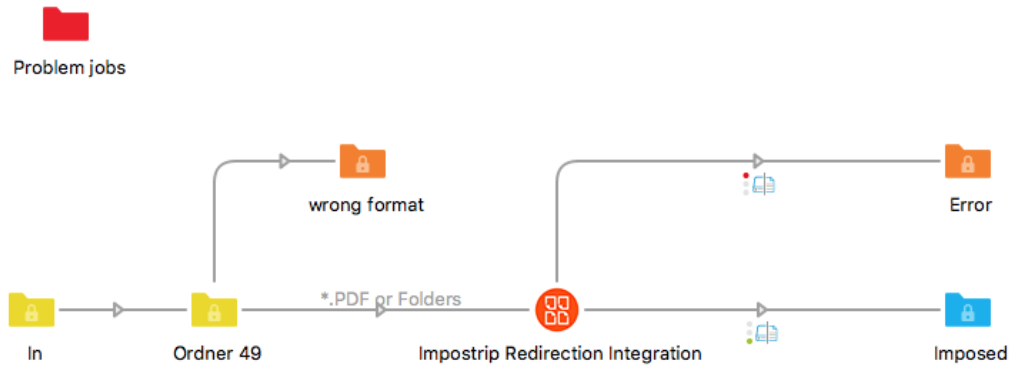
Property	Value
<b>Name</b>	Impostrip Redirection Integration
<b>Description</b>	
<b>Switch working path</b>	/Volumes/ImpoStrip 2019 Working
<b>Impostrip working path</b>	C:/ImpoStrip 2019 Working/
<b>Impostrip version</b>	Impostrip 2019
<b>IP address Impostrip</b>	192.168.0.140
<b>Timeout waiting time (sec)</b>	1200
<b>Waiting time (sec)</b>	1
<b>Autodelete inputfiles</b>	Yes
<b>Units</b>	mm
<b>Hotfolder</b>	Perfect Bound - 16p
<b>Quantity</b>	1
<b>Output all pages</b>	Yes
<b>Use custom values</b>	No
<b>Expert settings</b>	No



### Connections

Impostrip Redirection Integration uses TrafficLight outgoing connections. The processed job is routed according to its status (Success or Error). The created Audit-XML file is routed via the log connection.

The following screen shot demonstrates how the Impostrip Redirection Integration app can be integrated in a Switch flow.



## Properties detailed info

Property	Value
<b>Name</b>	Impostrip Redirection Integration
<b>Description</b>	
<b>Switch working path</b>	/Volumes/ImpoStrip 2019 Working
<b>Impostrip working path</b>	C:/ImpoStrip 2019 Working/
<b>Impostrip version</b>	Impostrip 2019
<b><i>IP address Impostrip</i></b>	192.168.0.140
<b>Timeout waiting time (sec)</b>	1200
<b>Waiting time (sec)</b>	1
<b>Autodelete inputfiles</b>	Yes
<b>Units</b>	mm
<b>Hotfolder</b>	Perfect Bound - 16p
<b>Quantity</b>	1
<b>Output all pages</b>	Yes
<b>Use custom values</b>	No
<b>Expert settings</b>	No

## Flow elements properties

- Switch working path:
  - Path to the Impostrip root folder seen from the Switch Server
- Impostrip working path:
  - Path to the Impostrip root folder seen from Impostrip
- Impostrip version:
  - Used Version of Impostrip (2019 or Legacy)
- Timeout waiting time:
  - Time the app waits for the imposed job before a timeout occurred
- Waiting time:
  - Time Impostrip waits before starting to process the job
- Autodelete inputfiles:
  - Set to "Yes" to App takes care about deleting files
- Units:
  - Units used in the app
- Hotfolder:
  - the name of hotfolder (setup) used to impose the job

- Quantity:
  - Number of impositions of the job file. When multiple PDFs are handed over in a folder differing numbers of copies can be set for each single PDF by adding #<number of copies> as a suffix to the *NameProper*. Jobs without this suffix will use the “Quantity” value.

E.g. the quantity value is set to “5”, two files in a folder are handed over with the jobnames `myFirstJob_#100.pdf` and `mySecondJob.pdf`. This will result in imposing *myFirstJob* a hundred times and *mySecondJob* five times.

- Output all pages:
  - Output all pages or a given page range
- Custom values:
  - hands over variable data for barcodes and text elements to Impostrip. Syntax used for this is <variable defined in Impostrip>TAB<value>CR, e.g.

```
myJobname      [job.getNameProper]
myJobnumber    12-3456
```

- Expert settings:
  - Additional settings to overwrite the setup defined in the hotfolder

<b>Expert settings</b>	Yes
<b>Change paper size</b>	Yes
<b>Width</b>	1050
<b>Height</b>	720
<b>Change trim page size</b>	Yes
<b>Width</b>	210
<b>Height</b>	297
<b>Show layout id</b>	Yes
<b>Comment</b>	Your comment here
<b>Offset x</b>	10
<b>Offset y</b>	10
<b>Font size</b>	12
<b>Change gutters</b>	Yes
<b>Column</b>	Multi-line text with variables defined
<b>Row</b>	Multi-line text with variables defined
<b>Change margins</b>	Yes, Custom Paper Size
<b>Right</b>	20
<b>Bottom</b>	15
<b>Add blank pages</b>	Yes
<b>Amount</b>	Single-line text with variables defined
<b>Grayscale</b>	50
<b>Caption</b>	Script expression defined
<b>Add custom mark</b>	Yes
<b>Name</b>	Barcode Offset
<b>Target</b>	Paper
<b>Anchor</b>	5 Center
<b>Anchor</b>	1 Center
<b>Offset x</b>	0
<b>Offset y</b>	0
<b>Rotation</b>	0
<b>All sheets</b>	Yes
<b>Side(s)</b>	Front
<b>Marker for custom number</b>	#