

Luno Tools Data Mapper

Description

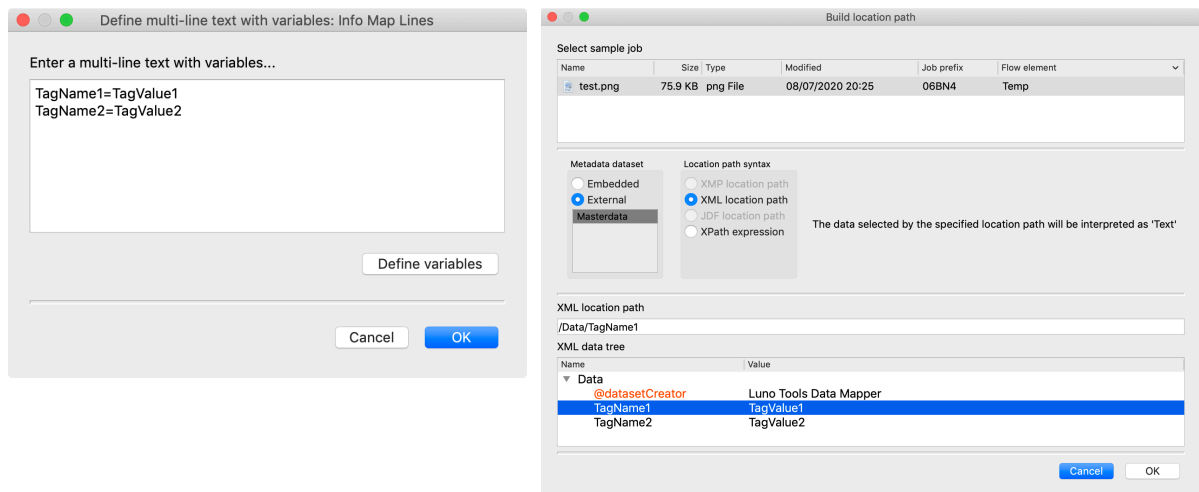
Data Mapper aims to be a better alternative to adding private data via the Folder element. A disadvantage to adding private data in Switch via the normal way is that when you want to use the stored private data you have to remember the exact name of the private data tag.

When you don't know the exact tag name you have to:

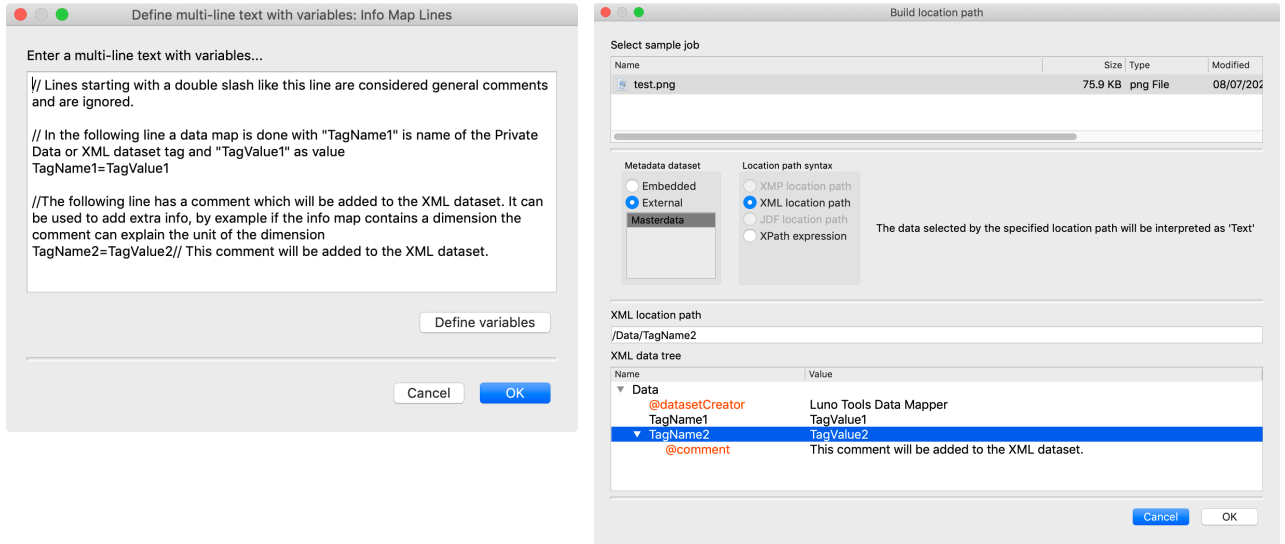
- Close the variables panel where you wanted to use the private data
- Go to the folder element where the private data was stored
- Open the private data property editor
- Copy the tag of the private data
- Close the private data property editor again
- Go to the flow element where you want to use the private data
- Open the property where you want to use private data
- Choose the private data Switch variable
- Paste the private data tag name so it can be used

This problem doesn't happen when using Data Mapper to store data in a job. Data Mapper stores the data in an XML dataset with a fixed structure. When building a Switch variable based on an XML dataset (and having a sample job), you can see the contents of the XML dataset, avoiding the need to copy paste the tag name.

The settings below result in the dataset shown next to it:

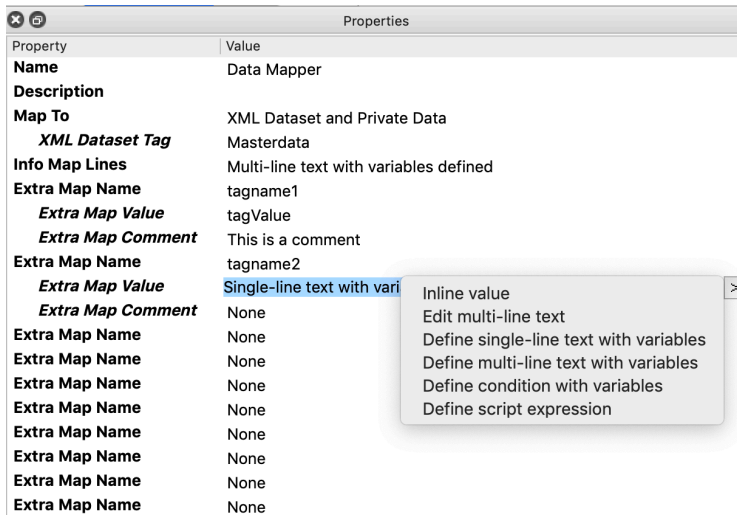


Data Mapper also allows the use of comments to give extra information on the data maps (which are available in the XML dataset)



It is also possible to use separate properties to set the tag name and value. This way it is possible to:

- Store data with returns or equal signs in it.
- Store data created using a condition with variables or a script expression.



Compatibility

Switch 18, update 3 and higher.

Data Mapper properties

- **Map to**

Choose if you wish to map the data to Private Data, an XML dataset or both.

Private Data can be used with only the Core Switch Module, however it requires you to remember the name of the Private Data tag when using it again.

An XML dataset requires the Metadata Module to be licensed. It has the additional benefit that you can use the Switch dataset browser to choose the right field from the dataset.

- **XML dataset tag**

Choose the name of the XML dataset tag.

- **Info map lines**

In this property you can add data maps. Please check the default value for the structure of the property.

Adding data maps with this method works best if the data map doesn't have any of the following limitations:

- The value of the data map contains multiple lines.
- The value of the data map contains an equal sign.
- The value of the data map is calculated using a script expression or condition with variables.

If you wish to add data maps with any of the above limitations, please use the "Extra map" properties instead.

- **Extra map name**

Name of the extra data map to be added.

- **Extra map value**

Value of the extra data map to be added.

- **Extra map comment**

Comment to add to the XML dataset for this data map. If none of empty no comment will be added.

This setting is only used when mapping to an XML dataset, it is ignored when mapping to private data.