

# axaio MadeToPrint and Enfocus SWITCH


axaio MadeToPrint is integrable with Enfocus' SWITCH workflow system. In order to use MadeToPrint in combination with SWITCH a dedicated MadeToPrint/SWITCH configurator was created. Please go to the [Enfocus App Store](#) to download the configurator app for your dedicated layout application.

Please make sure that your host application – Adobe InDesign, Adobe Illustrator or Quark XPress – and MadeToPrint Auto are installed on the same machine. The communication between SWITCH and MadeToPrint is realized by XML tickets, which are created by both systems and exchanged via hot folders.

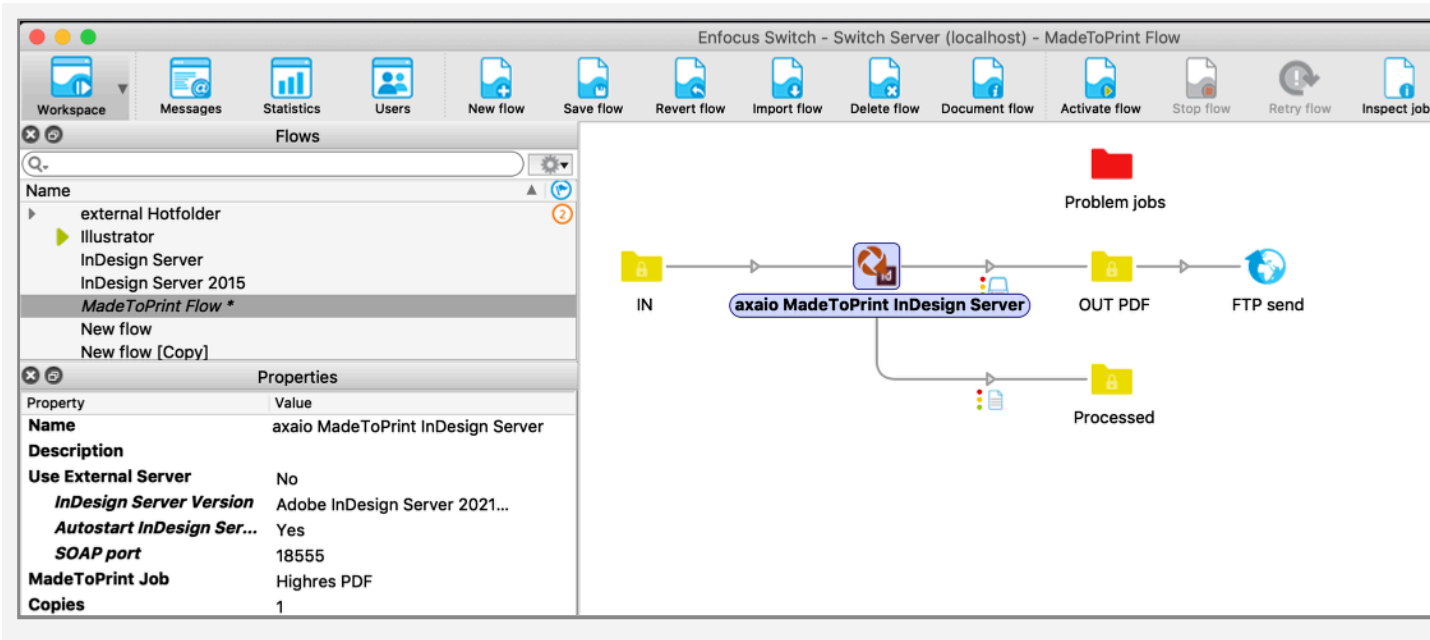
## Configuring MadeToPrint for SWITCH mode

*To setup this workflow users only have to configure and save MadeToPrint standard jobs, similar to the handling of the plug-in's Standard version. All further settings have to be configured within SWITCH.*

MadeToPrint creates a text file, listing up all ready-to-use standard jobs, which is picked up and read by SWITCH.

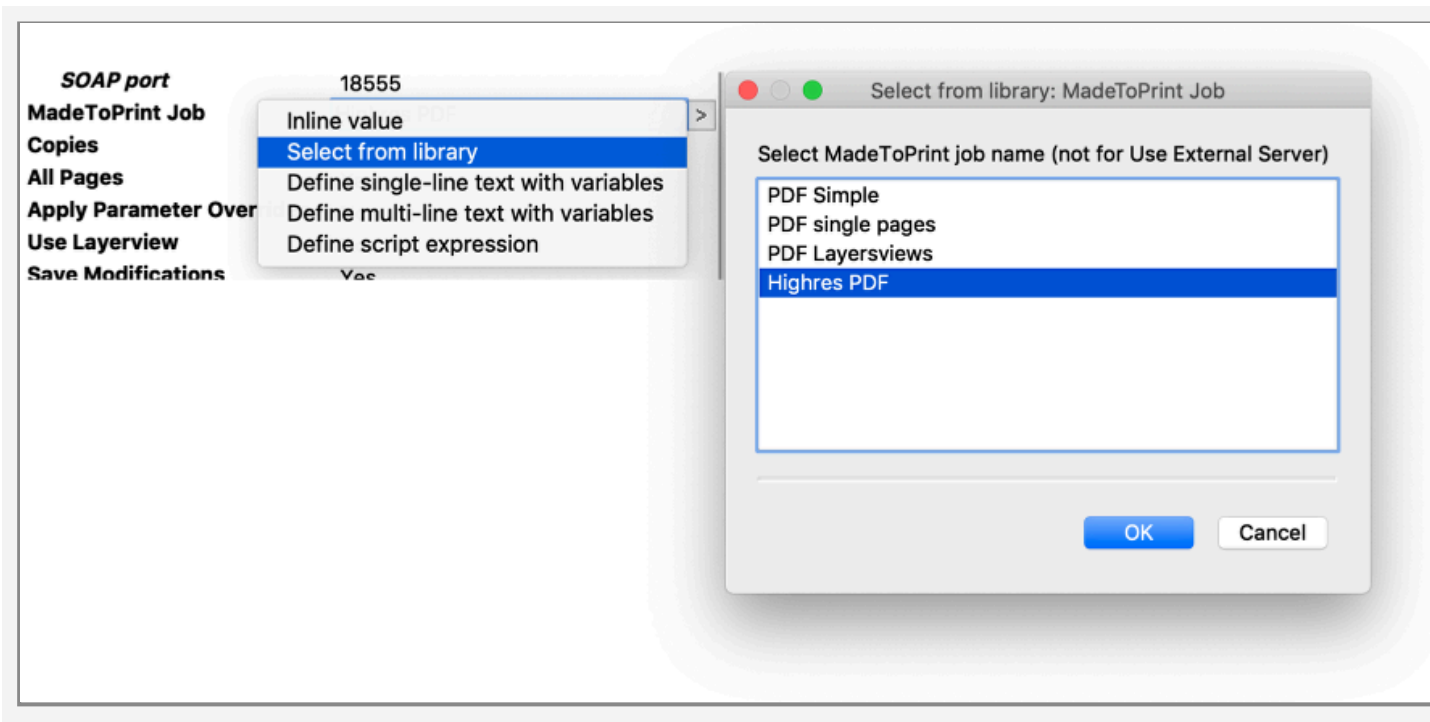
-  MadeToPrint Auto will automatically go into SWITCH mode in case the plug-in is addressed by SWITCH, further adjustments are not required.

Having completed the job set up, MadeToPrint can be integrated into flows from within the SWITCH interface, by dragging the MadeToPrint/SWITCH configurator from the elements pane into a flow. For proper processing, the MadeToPrint configurator needs at least one ingoing and one outgoing folder.



To complete the MadeToPrint flow you will have to pick a job from the exported list, which can be activated under *MadeToPrint jobname* and *select from library*.

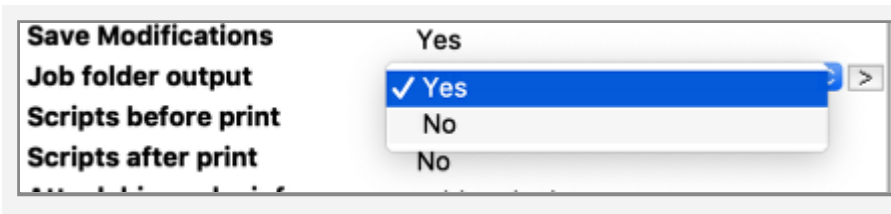
A popup window displays all available jobs.



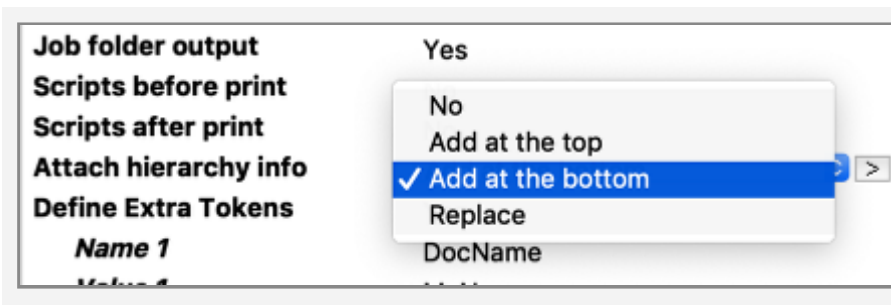
Moreover, jobs can also be determined flexibly by using variables (*Define single-line text with Variables*) and scripts.

## Creating folder hierarchies

SWITCH and MadeToPrint provide options to transfer path and folder hierarchies from MadeToPrint to SWITCH. In case a document is processed through MadeToPrint, the result file can be saved either directly to the SWITCH out folder or it can be submitted in a folder, carrying the same name as the result file.



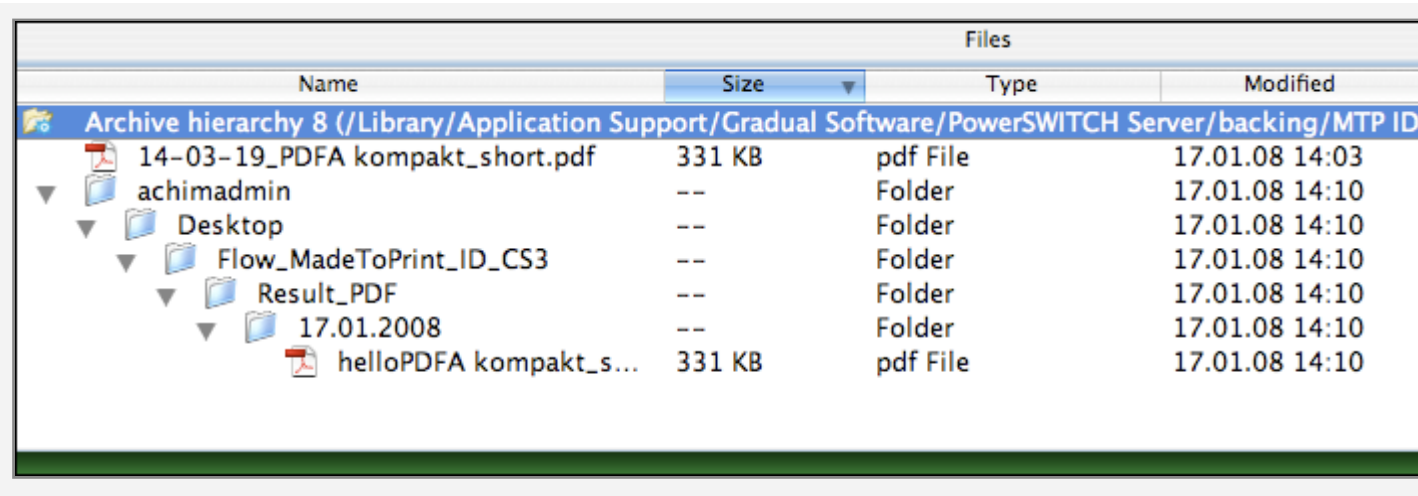
In order to get hold of the exact output path hierarchy determined inside a MadeToPrint job (under *File Name* and *Destination folder*), SWITCH offers three different settings options, all of them to be found under *Attach hierarchy info*.



For transferring the hierarchy path, one of these options has to be activated and the *Archive Hierarchy*-configurator has to be connected to an *out* folder.

Using this setup, the output file(s) will be produced together with the entire folder hierarchy.





Files				
Name	Size	Type	Modified	
Archive hierarchy 8 (/Library/Application Support/Gradual Software/PowerSWITCH Server/backing/MTP ID)				
14-03-19_PDFa kompakt_short.pdf	331 KB	pdf File	17.01.08 14:03	
achimadmin	--	Folder	17.01.08 14:10	
Desktop	--	Folder	17.01.08 14:10	
Flow_MadeToPrint_ID_CS3	--	Folder	17.01.08 14:10	
Result_PDF	--	Folder	17.01.08 14:10	
17.01.2008	--	Folder	17.01.08 14:10	
helloPDFa kompakt_s...	331 KB	pdf File	17.01.08 14:10	

When used in conjunction with SWITCH, MadeToPrint can only output files within the limits of SWITCH flows.

## Usage of MadeToPrint Token (“Jobticket Metadata”)

By choosing the menu entry *Define Extra Tokens*, MadeToPrint tokens can be utilized for adopting SWITCH metadata information. The proper token for this is *Jobticket Metadata*, which evaluates SWITCH based information for naming hierarchy paths, result files and/or infobars.

The following shows how MadeToPrint will create a result file named “hello” by evaluating SWITCH metadata (“Name 1” and “Value 1”). In SWITCH the metadata can also be defined using variables, making it highly customizable and automatable.

The screenshot displays the axaio MadeToPrint software interface. At the top, a workflow diagram shows the process flow: 'Eingang' (Input) leads to 'axaio MadeToPrint InDesign Server', which then branches into 'Verarbeitet' (Processed), 'Ausgang PDF' (Output PDF), and 'FTP send'. A 'Problem jobs' folder icon is also present above the server component.

The main configuration window is titled 'axaio MadeToPrint' and features a sidebar with various settings categories: General, Output, Distiller, File Name, Page, Layers, Infobar, Printjob Name, PostScript Expert, Image Info, Preflight, Imposition, Parameter Overrides, PDF Post Process, and Package. The 'File Name' category is currently selected.

Key configuration fields include:
 

- Destination Folder:** /Data/Flow\_MadeToPrint/Result\_PDF/<DATE["YYYY"]>/<DATE["YYYY-MM"]>/<DATE["YYYY-MM-DD"]>
- Preview:** /Data/Flow\_MadeToPrint/Result\_PDF/2021/2021-06/2021-06-14
- Destination File:** «JOB TICKET METADATA("DocName")»\_«RIGHT(00&PAGE NUMBER(), 3)»«OUTPUT FILE EXTENSION()»
- Preview:** \_001.pdf

On the right side, there are two panels:
 

- Name:** A list of job names including HMCo, MadeToPrint CS3, MadeToPrint XT7\_1, MTP ID test (highlighted), and Test CS3.
- Properties:** A table of job properties.

Property	Value
Scripts before print	No
Scripts after print	No
Attach hierarchy info	Add at the bottom
Define Extra Tokens	Yes
<b>Name 1</b>	DocName
<b>Value 1</b>	MyName
<b>Name 2</b>	
<b>Value 2</b>	
<b>Name 3</b>	
<b>Value 3</b>	
<b>Name 4</b>	
<b>Value 4</b>	
<b>Name 5</b>	
<b>Value 5</b>	
Use fonts in package	No

**Do you have a question or need further help?** Please send an email to: [support@axaio.com](mailto:support@axaio.com)