

ENFOCUS SWITCH CALDERANEXIO CONFIGURATOR

White Paper

This document explains how to use the Enfocus Switch CalderaNexio configurator with a Caldera Rip.

Table of contents

Table of contents	1
Introduction	2
CalderaNexio	Erreur ! Signet non défini.
Enfocus Switch Configurators	2
Requirements	2
Caldera Nexio : Fonctionnalités	3
Configuration	3
The Job Tracker	6
Using the Caldera Nexio Submit Configurator	7
Using the Caldera Nexio Collect Configurator	10

Introduction

CalderaNexio

CalderaNexio is a JDF/JMF Connector for the Caldera Rip; it enables Job Ticket based submissions, enabling parameters to be sent to the rip for Job Processing (for example: Printer, Copies, Order Number).

Enfocus Switch Configurators

Two configurator are available in **Enfocus Switch**:

- **Caldera Nexio Submit**: JDF based Job Submissions
- **Caldera Nexio Collect**: JDF based Job Status retrieval.

Requirements

Caldera Rip V10 (Visual or Grand, Copy does not support CalderaNexio).

CalderaNexio License (CalderaNexio is an optional license in Caldera):

- CalderaNexio Full: Support for **Caldera Nexio Submit** and **Caldera Nexio Collect**
- CalderaNexio Submit: Support for **Caldera Nexio Submit** only.

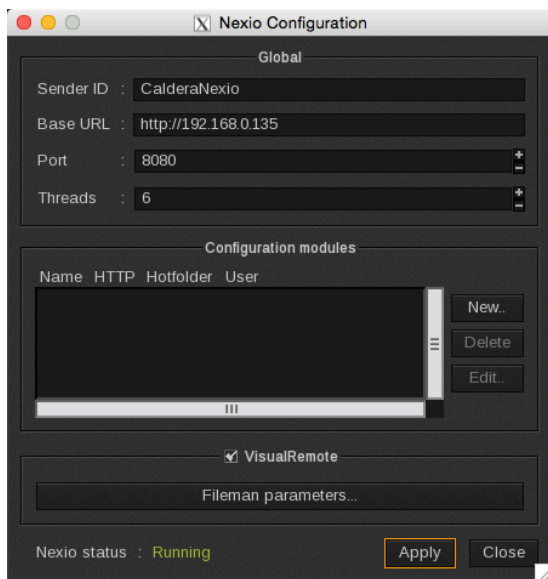
Enfocus Switch Caldera Nexio configurator.

Caldera Nexio : Fonctionnalités

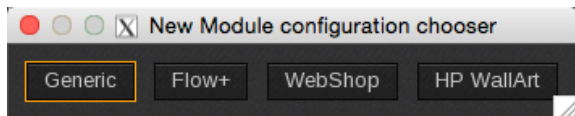
Configuration

The CalderaNexio configuration is located in the “Special” menu inside the Caldera Rip.

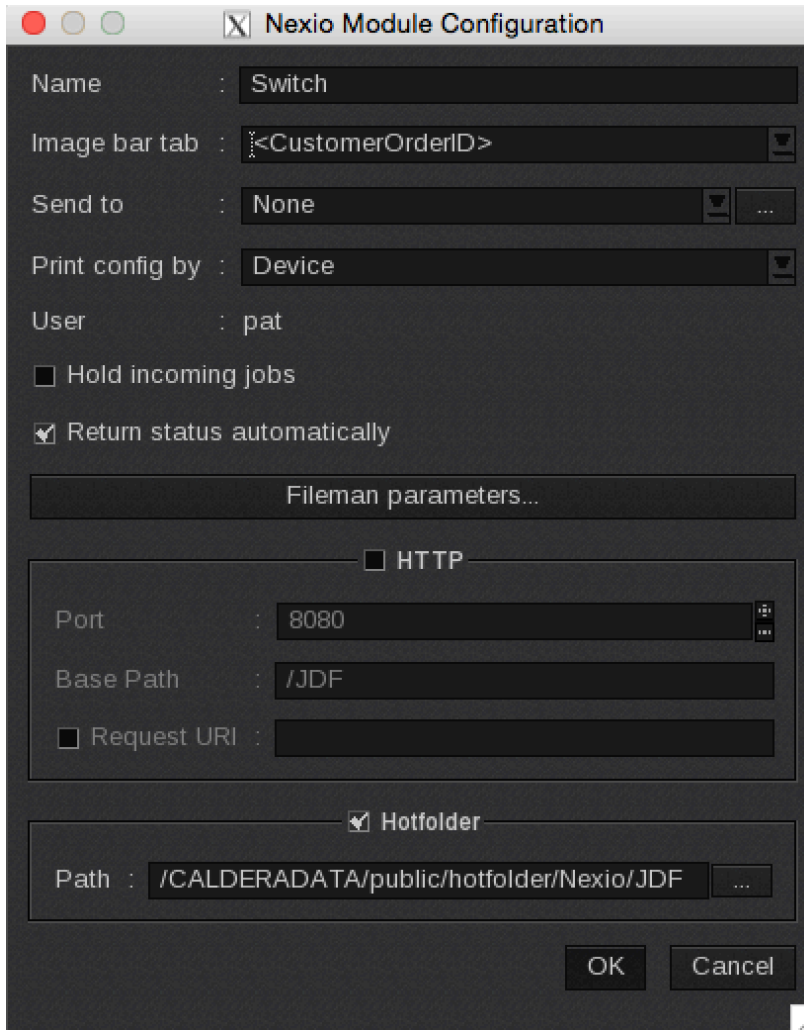
By default no modules are configured, make sure that the **Base URL** matches the IP address of your RIP.



- Press **New** to add a new Module.
- Choose **Generic** as type.



- The following screen will appear

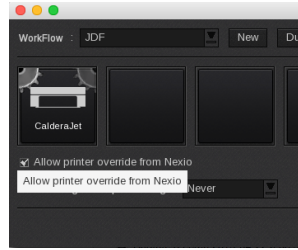


Each Instance has several Options.

Image bar Tab: The tab where to send jobs coming from this queue. (Elements shown between <> will create a dynamic Tab based on the content of the JDF, for example **CustomerOrderID** will match **Order Number** in the Switch Configurator

Workflow: The workflow to send the Jobs to here we can distinguish 2 cases:

- The JDF contains the Printer, or a Printer + Preset, the workflow itself is just used to define that a process should be engaged once the file is imported, make sure to enable the **“Allow Printer override from CalderaNexio”** option in the workflow.



The **Printer** option in the Switch Configurator is used for this, you can specify following values: PrinterName or PrinterName: PresetName:

- PrinterName is the name of the Printer in Caldera (the servername)
- PresetName is the name of a Print-Config in Caldera



- The JDF does not contain the Printer or Printer + Preset, then the workflow settings will be used.

If no workflow is selected the file is imported into the relevant Tab, all JDF information are tagged to the file. So by selecting the file and pressing « Enter » the correct printer with the Preset (if specified) defined in the JDF is opened, and displayed in the Printer GUI.

Hold Incoming Jobs: Instead of being automatically imported and sent to a workflow (If configured so), the Jobs are held in the JobTracker. From the JobTracker, they can be submitted to continue the normal process. (Useful in case you need a manual check of the incoming files, before they get imported).

Return Status Auto: CalderaNexio will send Job Status automatically; else a confirmation must be done in the JobTracker.

Fileman param: Since import settings cannot be defined in JDF, you can use this button to define how files should be imported.

Hotfolder: Here you define in which way files will be sent to the CalderaNexio. The **Hotfolder** must match the **Hotfolder Path** in the configurator. We suggest to put in under PUBLIC/hotfolder/XXX for standardization purposes

HTTP: Not needed.

- Apply the changes and restart Caldera.

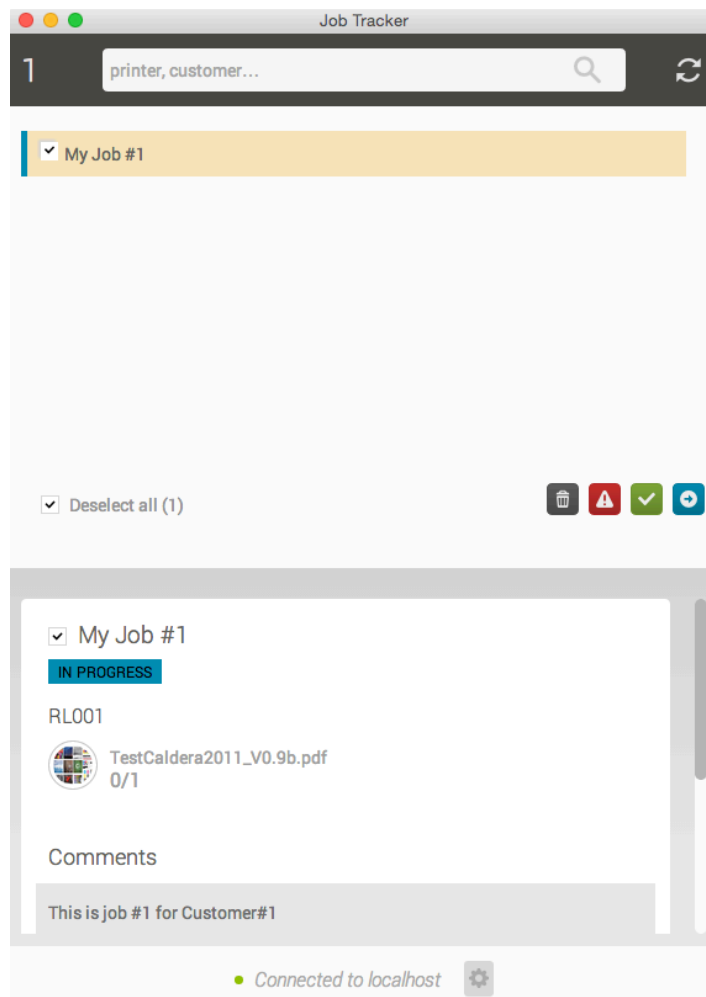
The Job Tracker

Each and single configured module will add a JobTracker instance inside the RIP.



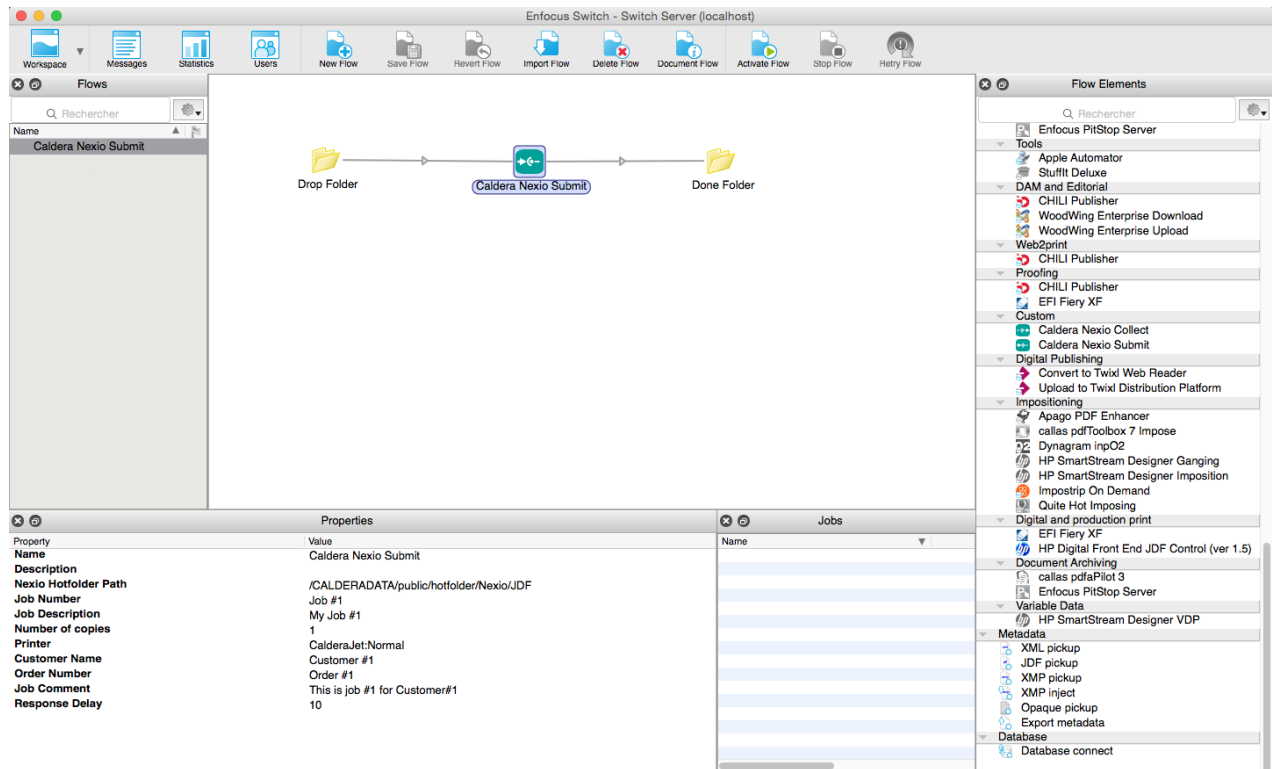
When opening the JobTracker you will see a list of available files within this CalderaNexio Instance, basically like a Spooler of this CalderaNexio queue.

All Jobs will appear in the JobTracker



Using the Caldera Nexio Submit Configurator

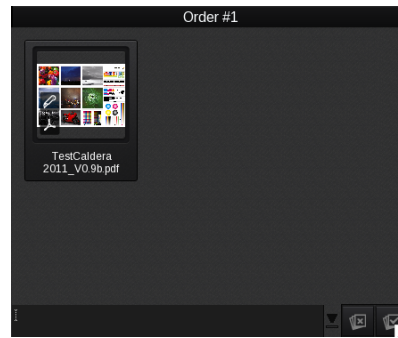
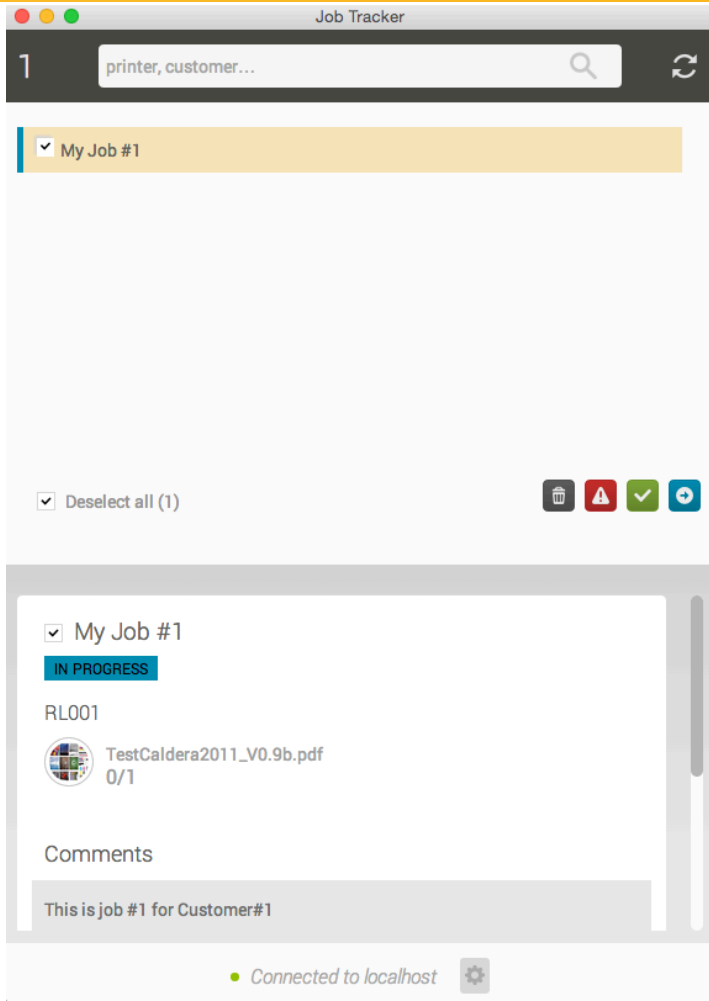
Here is a very simple Sample of the Caldera Nexio Submit Configurator



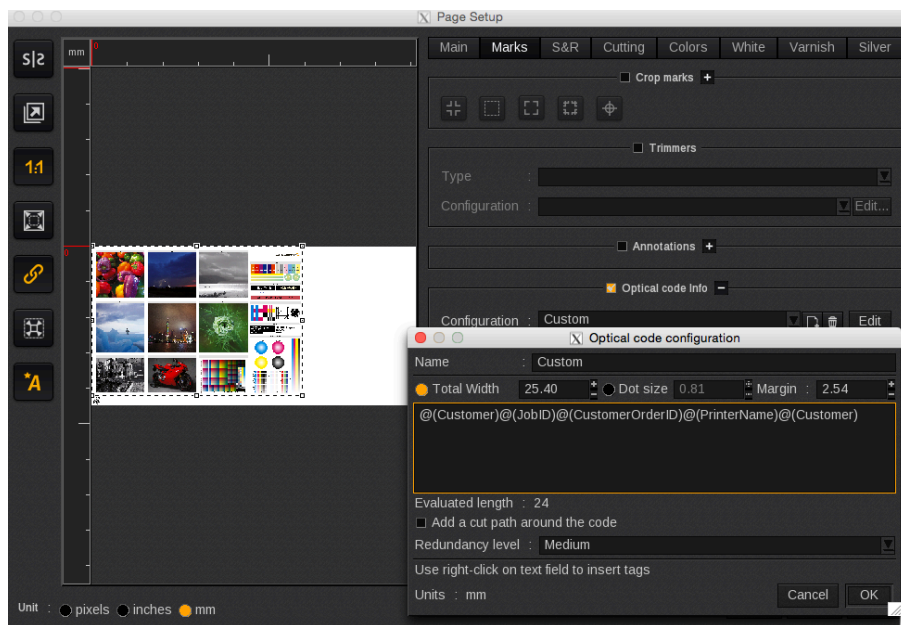
When submitting a file the Job will appear in the JobTracker and be imported depending on the setting: **Hold Incoming Jobs**.

If held you have to press the Blue Arrow button to import the Job.

The Job will also be imported in the ImageBar in the tab Corresponding to the **Image bar Tab**, and sent or not to a Workflow.

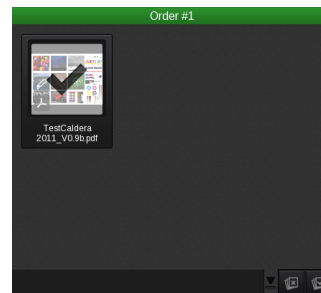
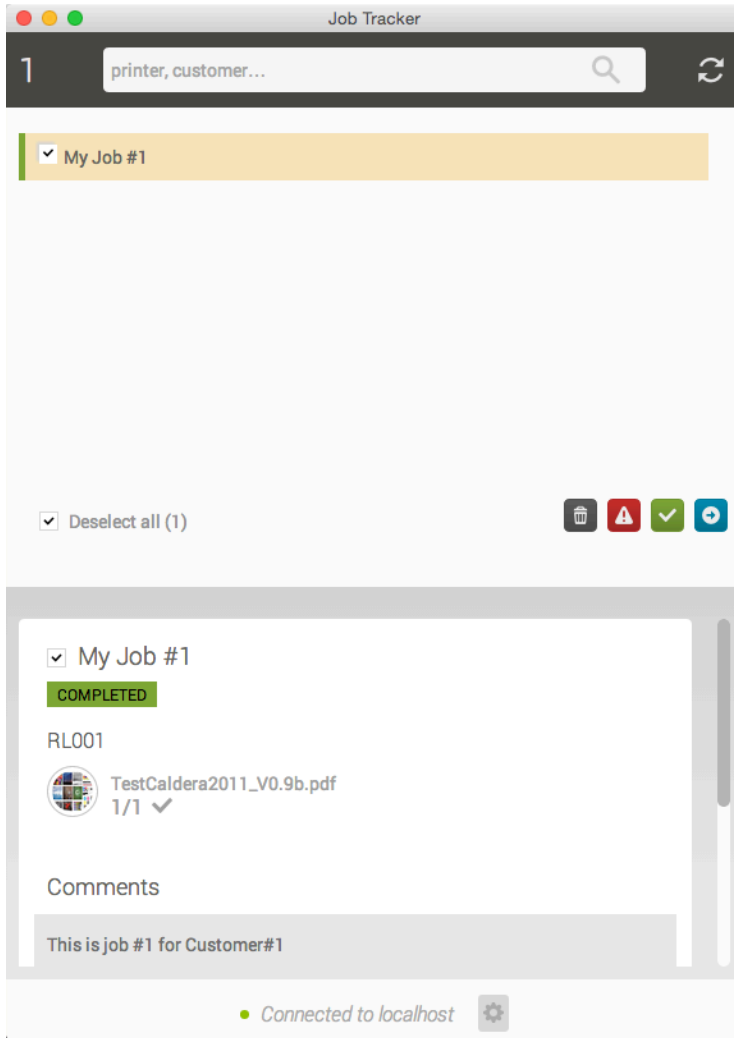


Most of the Element Properties of the configurator can be encoded in a QR-Code when printing.



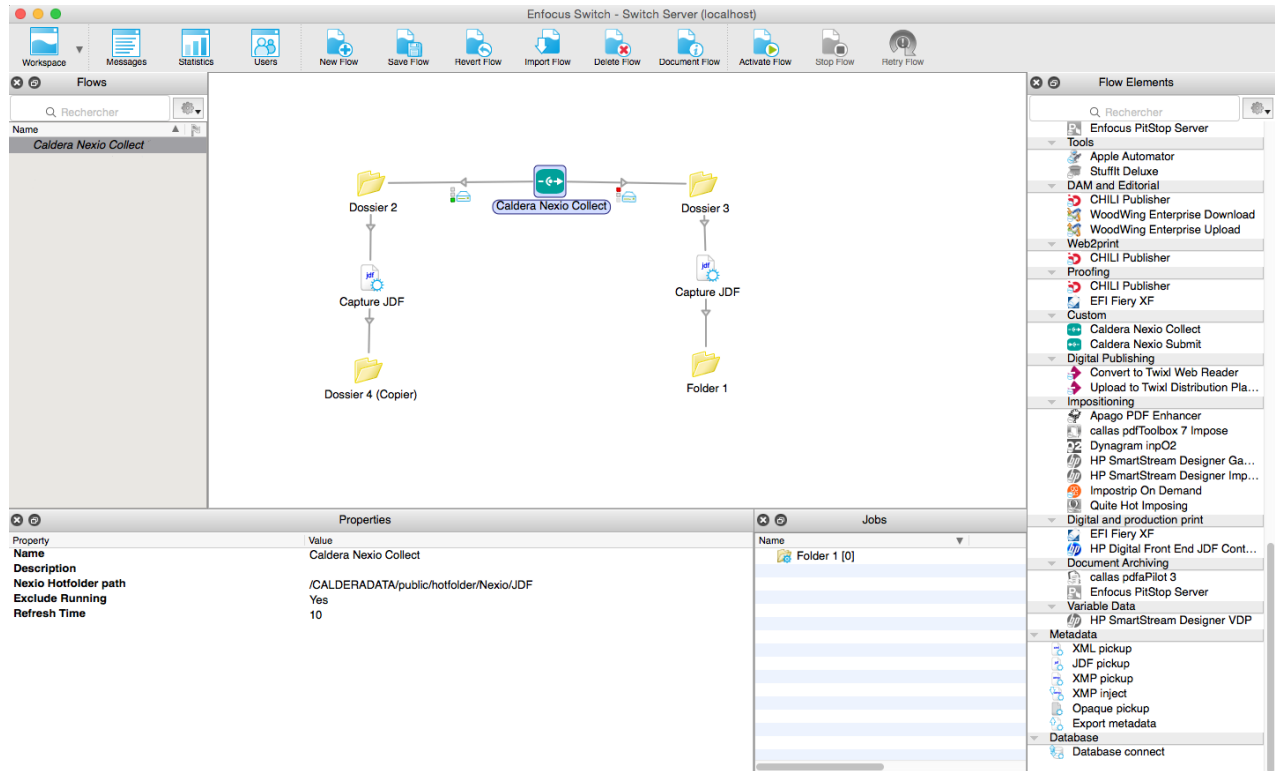
Once the required number of copies of the Job has been Printed (Ripping is not sufficient):

- The Job will be tagged as done in the ImageBar
- The Tab will become Green if all Jobs in that Tab are tagged.
- The Job will become Green in the JobTracker



Using the Caldera Nexio Collect Configurator

Here is a very simple Sample of the Caldera Nexio Collect Configurator



The configurator is linked to a Caldera Nexio hotfolder, this should be a hotfolder which the CalderaNexio Submit configurator sends jobs.

Every time a Job is finished, has failed, or is re-printed, a JDF will be generated and sent to the Outgoing connection.

If the Exclude Running property is off, then running jobs will be sent as well as a JDF node.

The JDF file will contain several RessourceAudit (as many as events on the Jobs, reprints for example).

Path will look as this:

```
[Metadata.Text:Path="/jdf:JDF/jdf:AuditPool[1]/jdf:ResourceAudit[2]/jdf:RunListLink/cal:Status/jdf:job_state[1]",D
ataset="Jdf",Model="JDF"]
```

An advanced documentation is available, (explaining the various Nodes of the JDF) as well as integration help from the Solutions Integration department of caldera : solutionsintegration@caldera.com

