

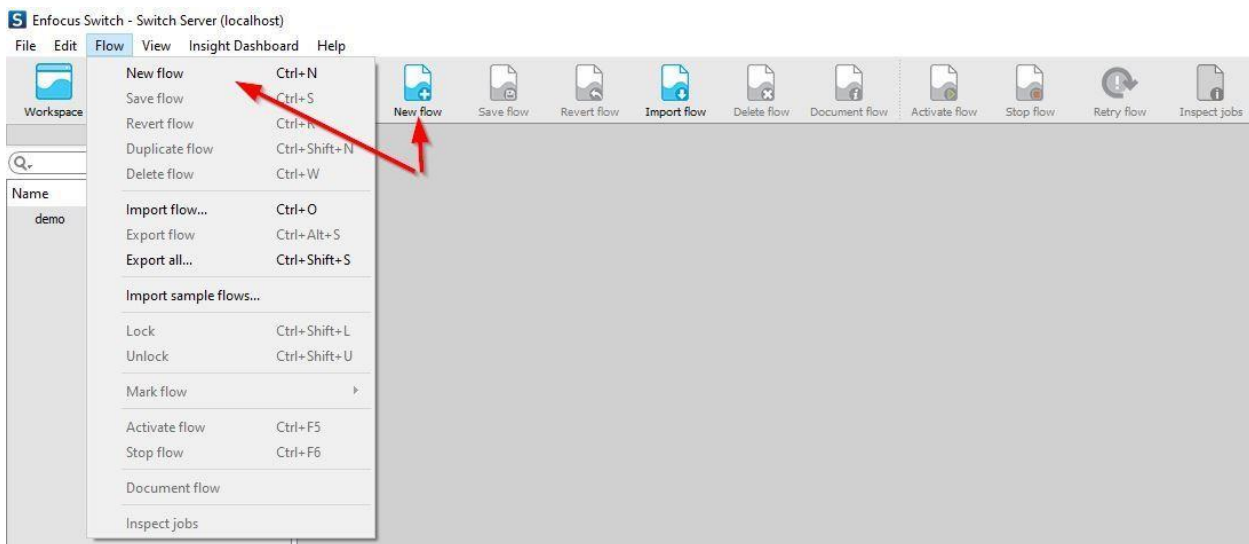
ONYX Switch Connect & ONYX Status:

Setting up a workflow and configuring the apps

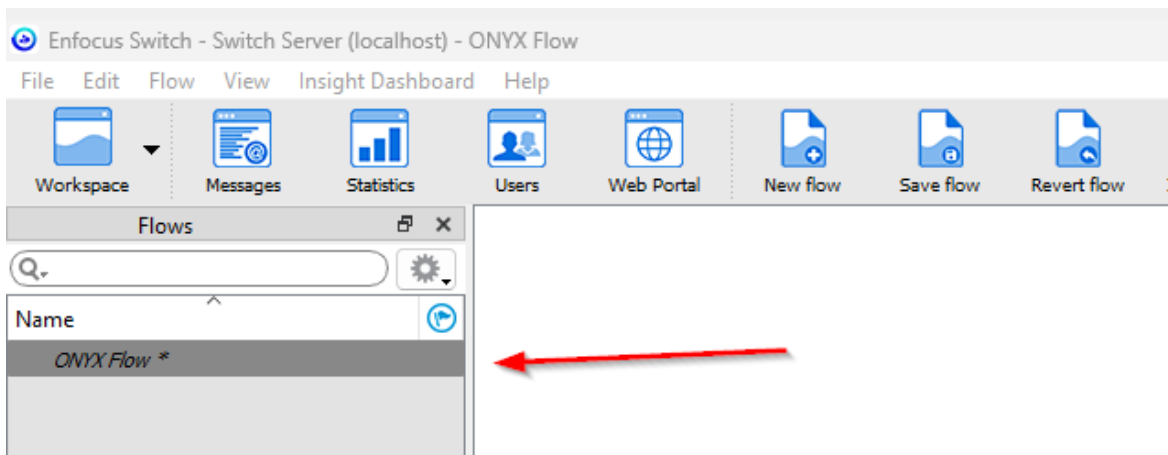
Overview:

The ONYX Switch Connect™ App processes jobs and sends them to Thrive to be ripped and printed. It outputs a JDF file containing information about the job submitted. The ONYX Switch Status™ App will use the JDF file and add notifications as the job is processed in ONYX Thrive. It will generate reports that the job was created, printed, archived (moved to buffered) and/or deleted.

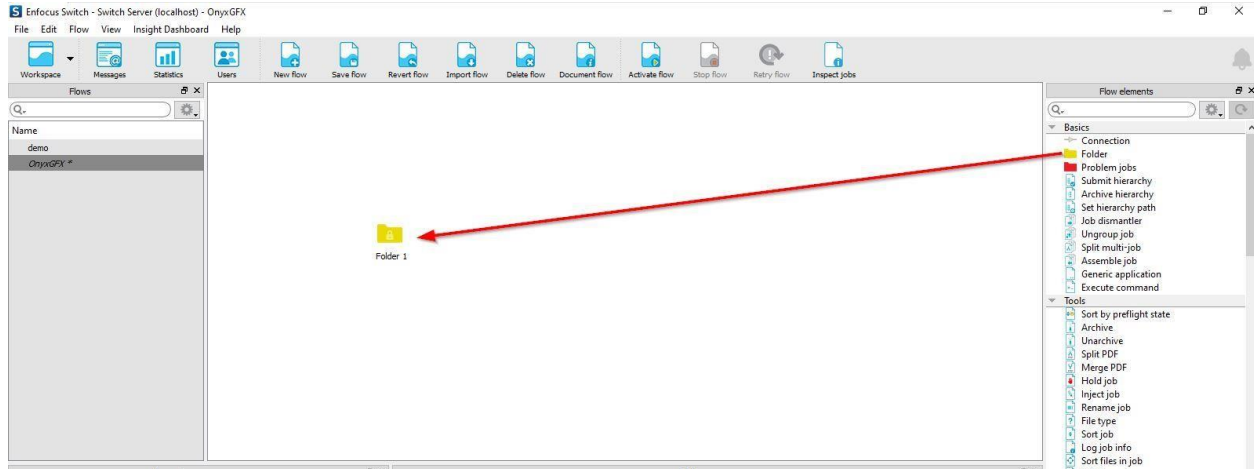
1. On your PC create a folder to hold your input and output folders for the flow. Inside that folder create three or more additional folders. i.e. input, output, status output.
2. Select "New flow"



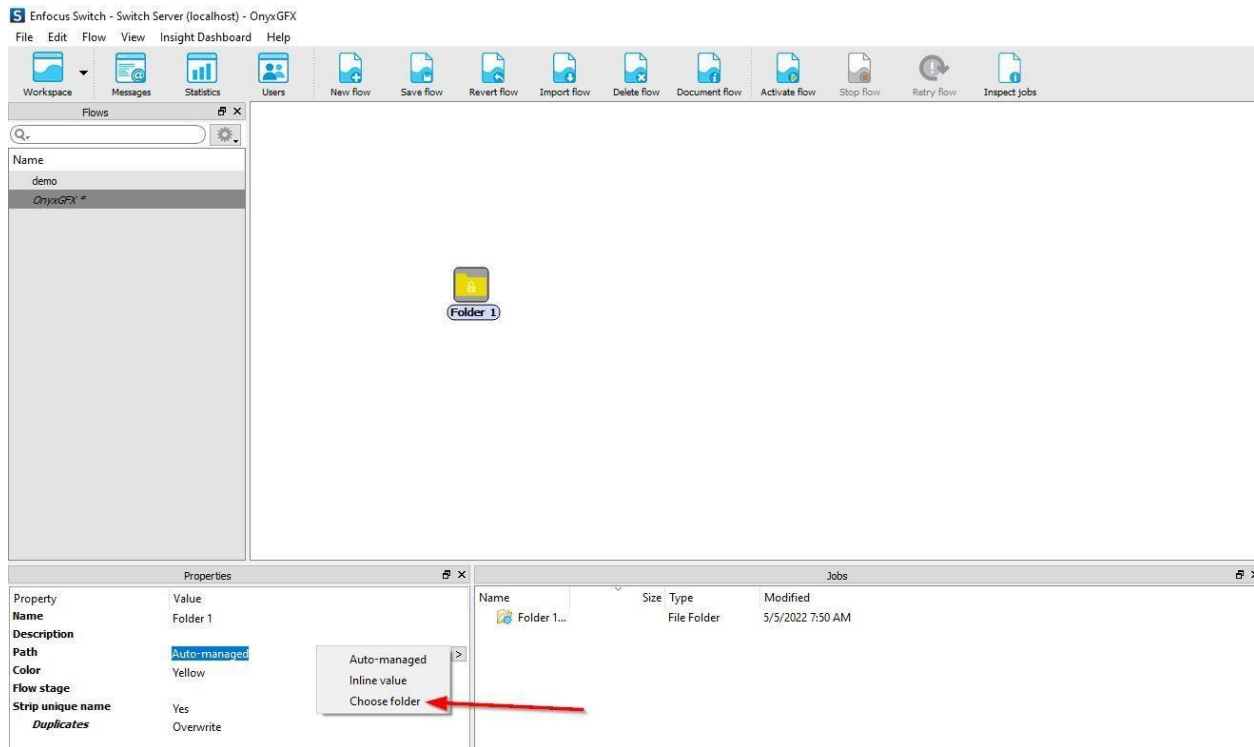
3. Name your workflow.



4. From "Flow elements" drag a folder into the work area.

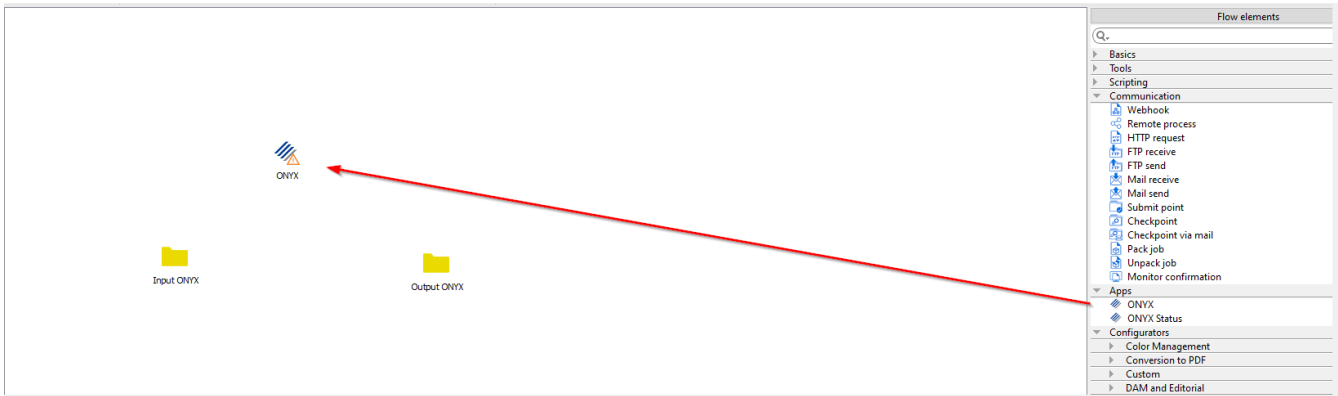


5. Select the folder. Then go to Properties>Path>Choose Folder. For this first folder we are going to select the input folder that we created in step one. You can set the folder name as desired.

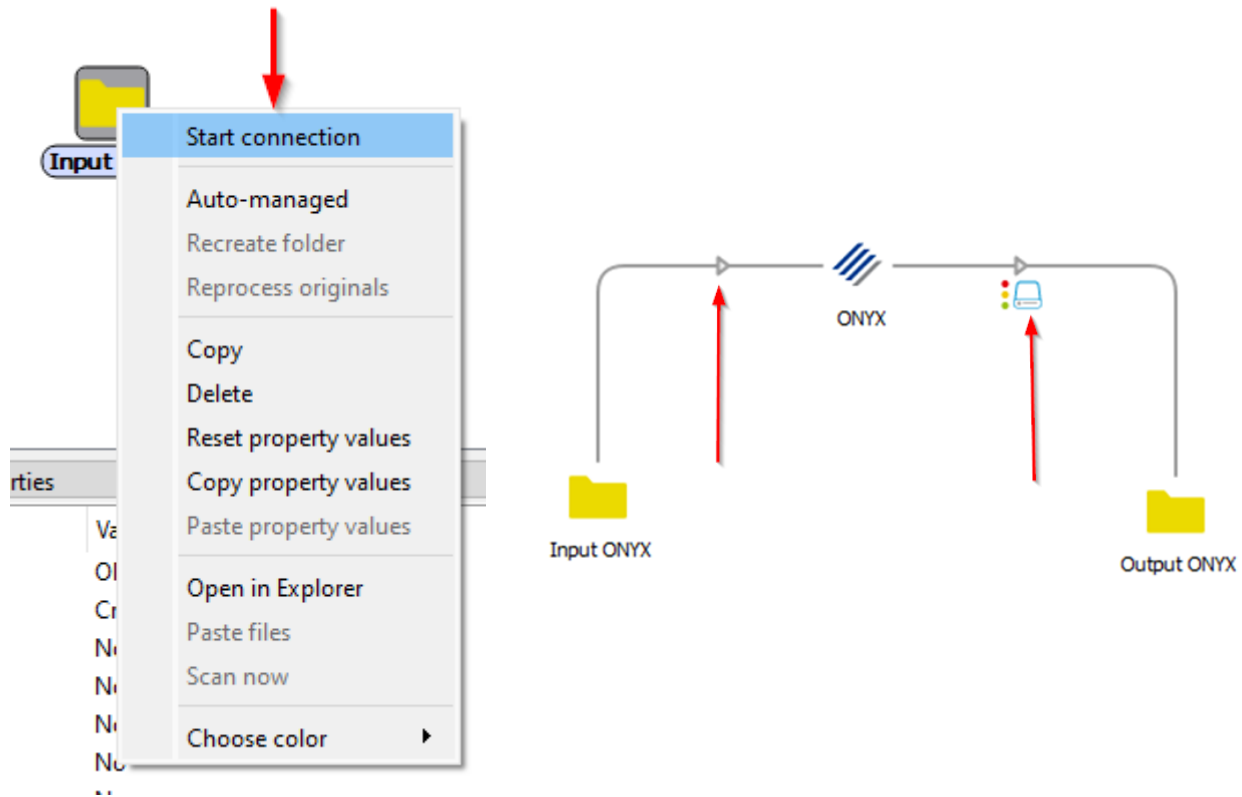


6. Repeat step 5 and select the output folder created in step one.

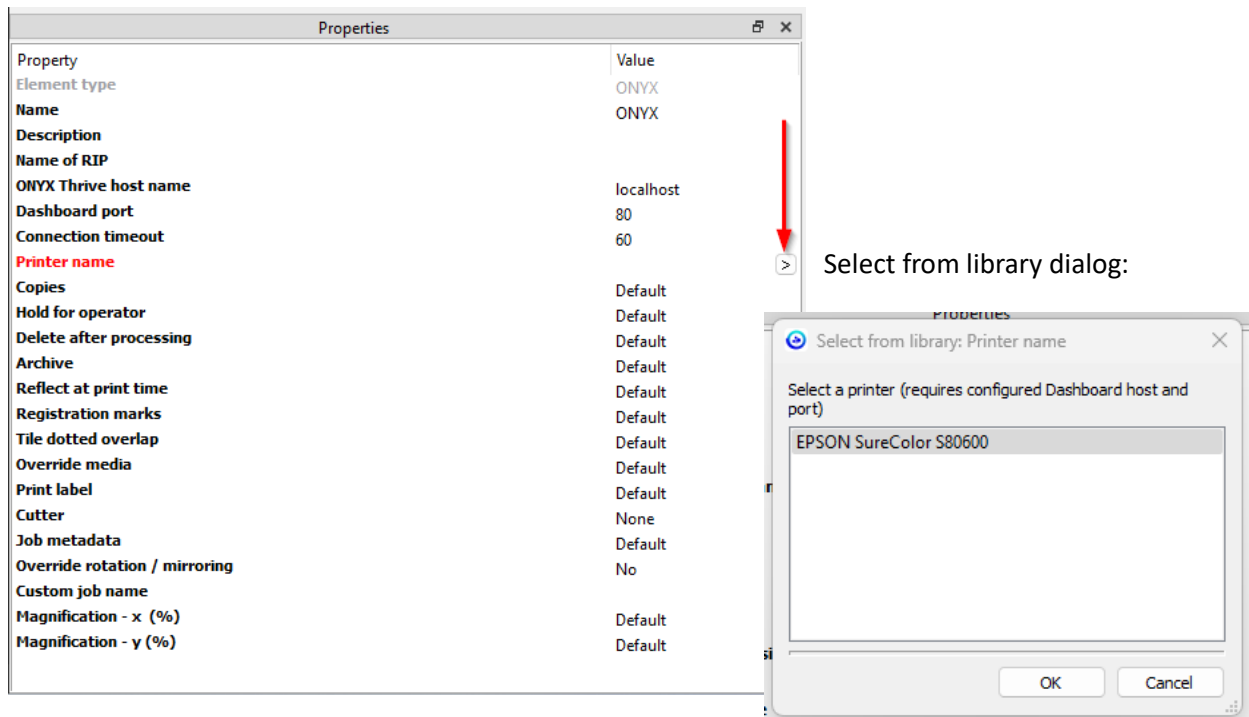
7. On the right side under Flow Elements>Apps select ONYX and drag it into the work area.



8. Right click on the input folder and select “Start Connection”
 - a. Drag the link over to the ONYX icon. Then repeat the process by right clicking on the ONYX icon and connect it to the output folder.

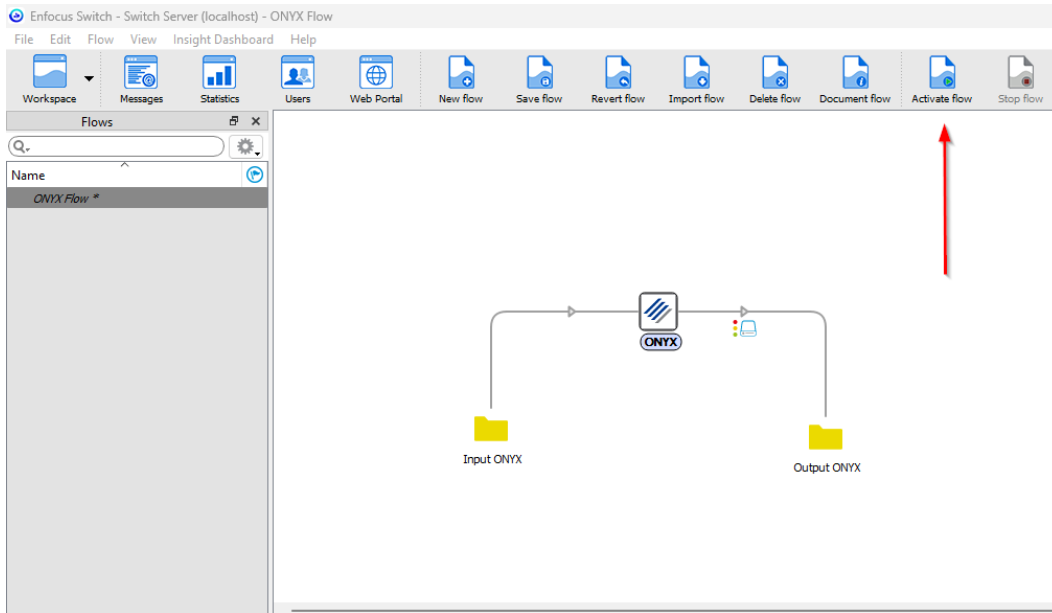


9. Click on the ONYX Icon and take note of Properties pane.
 - a. **ONYX Thrive host name:** The default value is localhost. If thrive is on a different machine than Enfocus Switch app, change the default value to the PC’s hostname or IP Address.
 - b. **Dashboard Port:** The default port number for Dashboard is 80. To verify the port number for Dashboard, go to Thrive and click File > General settings > Connections > Web Port. The port shown must be open for the ONYX app to communicate with Thrive.
 - c. **Connection Timeout:** The default is 60 seconds. This property determines how long the ONYX app will wait for a connection to Thrive.
 - d. **Printer Name:** The printer the job should be submitted to and configurable printer settings. To select a printer, hover the mouse to the right side of the field. An arrow button should appear. Click this icon and click “Select from Library”. This will open a dialog with a list of printers currently loaded in Thrive. If this field returns no printers, then the ONYX app has not made a connection to Thrive. Select desired printer and click OK.

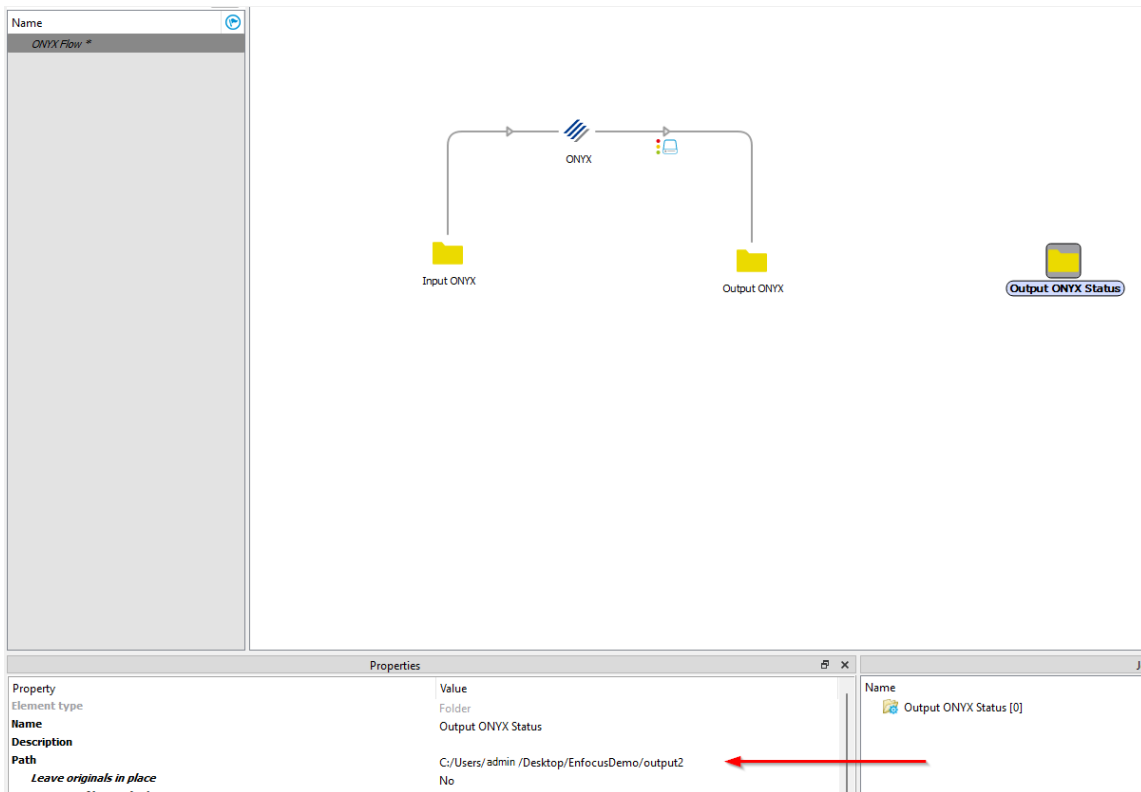


- e. You can continue to select the media, mode, copies and so forth.

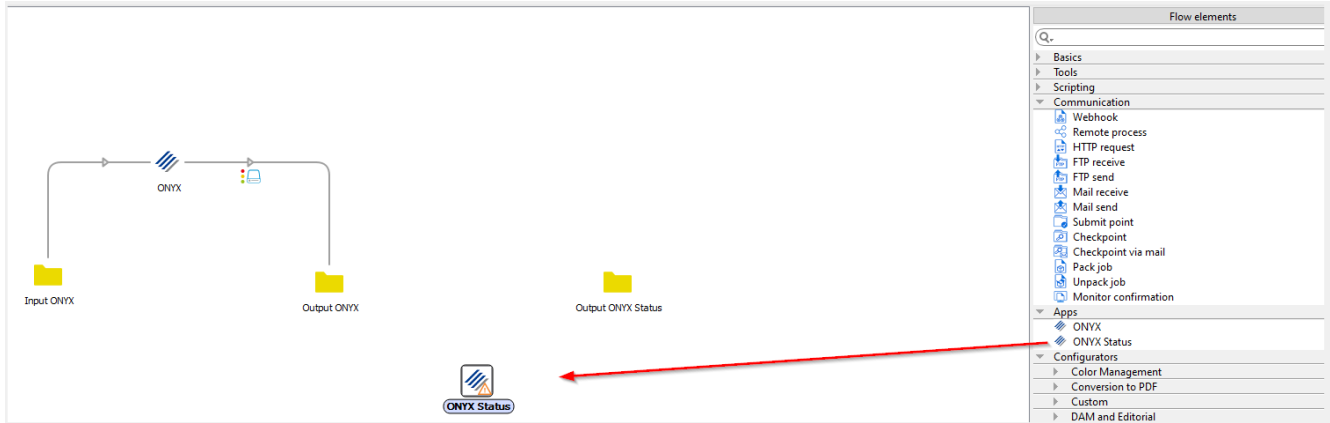
10. If you plan on only using the ONYX app, the configuration process is finished. To use ONYX status with the ONYX, continue to step 12.
11. Now that ONYX is configured, you can activate the flow by clicking “Activate Flow” and start processing jobs by adding them into the ONYX app’s input folder.
 - a. Add jobs to ONYX input folder.
 - b. Those jobs will now be processed through ONYX and sent to the output folder.



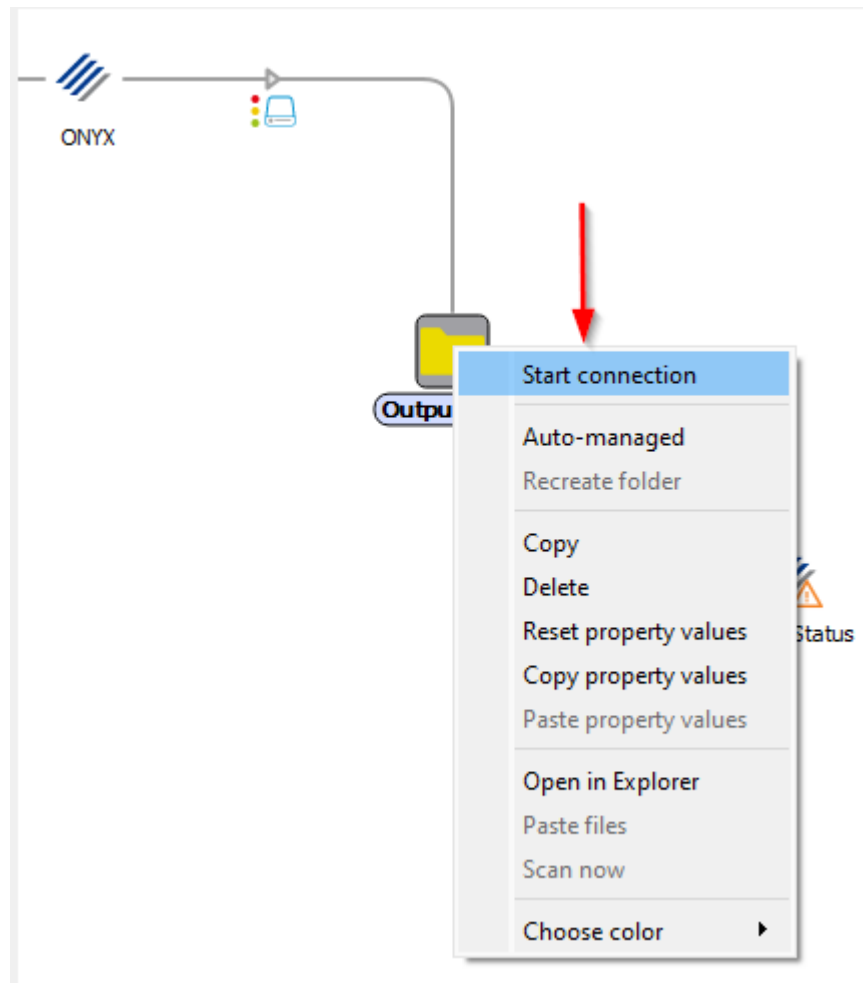
12. To configure the ONYX Status app, add another folder to the work area and select the desired path and name.



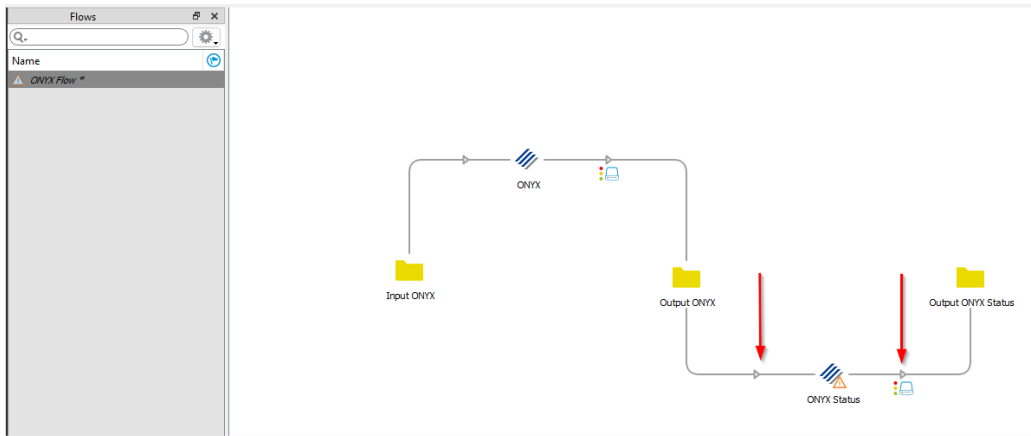
13. On the right side under Flow Elements > Apps select Onyx Status and drag it into the work area.



14. Right click on the ONYX App's Output folder and select "Start Connection".



15. Drag the link over to the ONYX Status icon. Then repeat the process by right clicking on the ONYX Status icon and connect it to the output folder.



16. Click on the ONYX Status Icon and add the same printer used in Onyx to the ONYX Status Properties.
 - a. Take note of the available properties for ONYX Status.
 - b. ONYX Thrive host name, printer and Dashboard port should match the ONYX app.
 - c. Status Timer's default is 300 seconds (5 Minutes). This is the interval to wait before ONYX Status starts processing new jobs in the ONYX output folder. Change this value to smaller value for jobs that process and print quickly in Thrive. Otherwise, for longer jobs, the default of 5 minutes may be sufficient.
 - d. The Reset Global Data at Startup property clears the ONYX Status Cache. This should be changed to Yes if there is an unexpected failure with ONYX Status processing jobs or Enfocus Switch shuts down unexpectedly.

The screenshot shows the 'Flows' editor with the 'ONYX Status' icon selected. A red arrow points from the icon to the 'Properties' window. The 'Properties' window is open, showing a list of properties for the 'ONYX Status' element. A red box highlights the properties listed below.

Property	Value
Element type	ONYX Status
Name	ONYX Status
Description	ONYX Status
Name of RIP	
ONYX Thrive host name	localhost
Dashboard port	80
Printer name	EPSON SureColor S80600
Connection timeout	60
Status Timer	300
Reset Global Data at Startup	No

17. Once both ONYX and ONYX Status are configured, you can activate the flow by clicking “Activate Flow” and start processing jobs by adding them into the ONYX app’s input folder.

The screenshot displays the Enfocus Switch software interface for configuring an ONYX flow. The main workspace shows a flow diagram with the following components and connections:

- Input ONYX**: A folder icon representing the input source.
- ONYX**: A component that receives data from the input folder.
- Output ONYX**: A folder icon representing the output destination for the ONYX component.
- ONYX Status**: A component that receives data from the Output ONYX folder.
- Output ONYX Status**: A folder icon representing the output destination for the ONYX Status component.

The flow is activated by clicking the **Activate flow** button in the top toolbar, which is highlighted by a red arrow. The Properties panel on the left shows the following details for the **ONYX Flow**:

Property	Value
Name	ONYX Flow
Description	Created at 2023-07-24 오후 2:10
Background image	None
Header image	None
Marker image	None
Show advanced element properties	No
Time-of-day window	No
Day-of-week window	No
Day-of-month window	No

The right-hand Properties panel shows the selected folder: **Input ONYX [0]**.