



# Review 2427

Release notes



# Contents

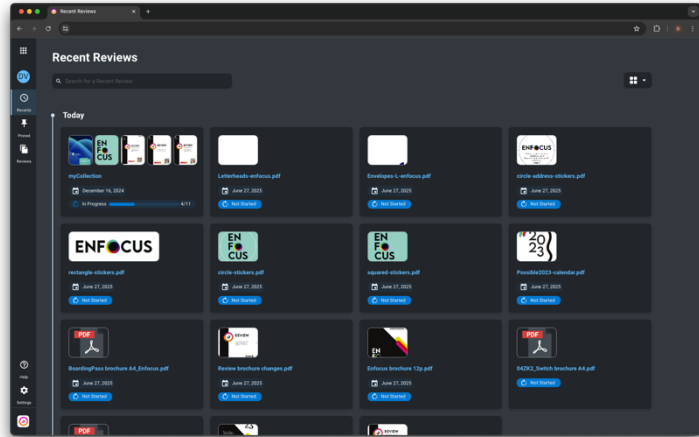
<b>Admin</b>	<b>3</b>
Recent reviews	3
Pinned Reviews	3
<b>Collections</b>	<b>4</b>
Search bar	4
Filter options	4
<b>Switch Review app</b>	<b>5</b>
Improvement	5



# Admin

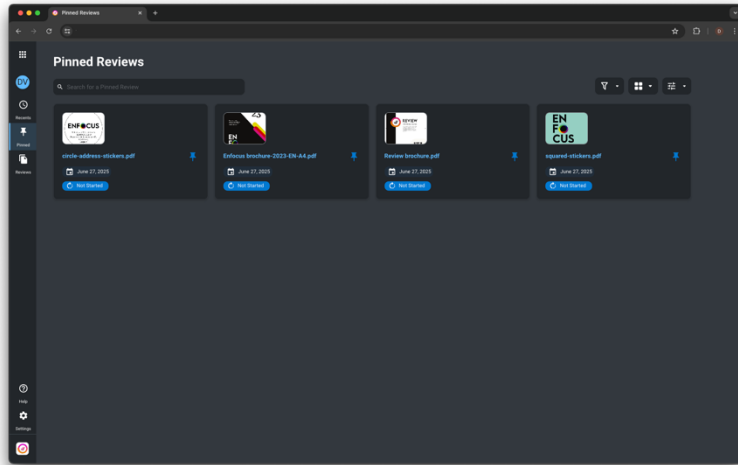
## Recent reviews

This new functionality allows you to view all historical review activity in one convenient place, providing you with a comprehensive overview.



## Pinned Reviews

You can pin a review job to closely track its progress, ensuring that jobs needing special attention are monitored closely. This feature empowers you to effectively manage and oversee review processes.

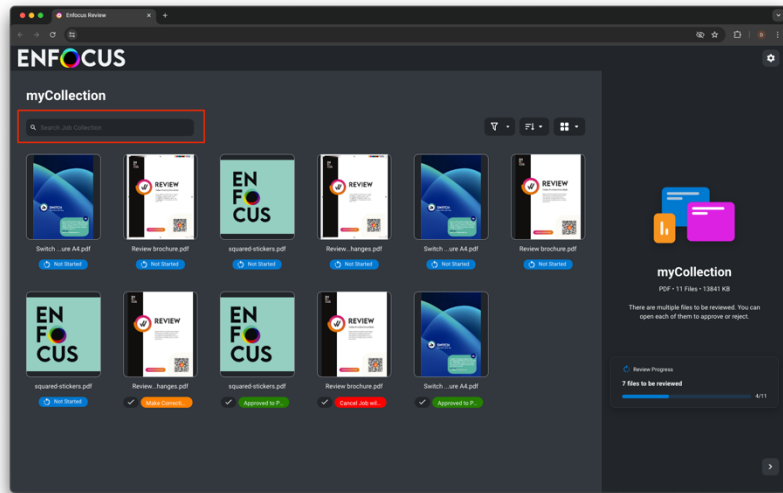




# Collections

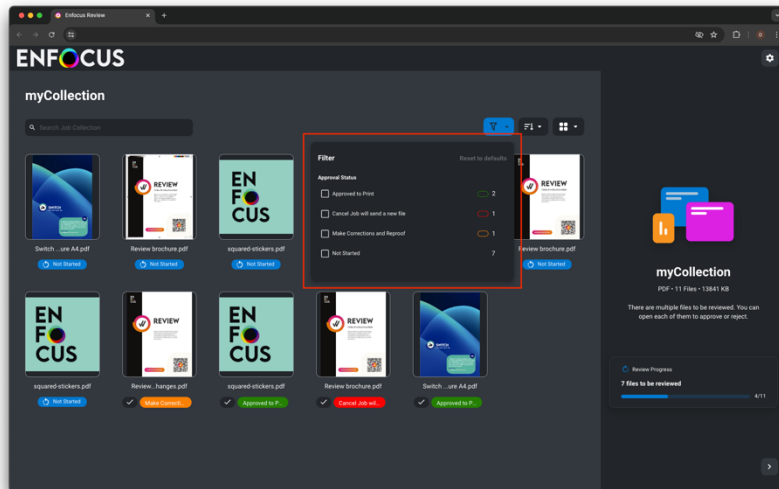
## Search bar

In the collections interface, a new feature has been added that enables users to easily locate specific reviews within a collection. This enhancement includes a search bar which permits users to search by either the full file name or partial file names.



## Filter options

In the collections interface, a new feature has been introduced that allows users to easily filter reviews based on their current status. This improved filtering functionality enables you to view reviews that are in progress, not yet started, or already completed with enhanced clarity.





# Switch Review app

## Improvement

- In the previous version, the double-page view did not function when the view settings were set to 'advanced'. This problem has been fixed in the current version.
- In the previous version, certain jobs were not progressing within the Switch flow even after the customer had made a decision. This also resulted in numerous warning messages when the total number of jobs exceeded 100.